

Spring/Summer 2025 Newsletter

Yellowhead County's

Yellowheadlines

A newsletter for Yellowhead County residents, visitors, property-owners, and other stakeholders that highlights municipal news, projects, and County services.



A LOOK INSIDE



2025 CAPITAL PROJECTS	3
YCE MULTIPLEX UPDATE	5
GENERATIONS CONNECT	6
NAMING THE LAND	11
COMMUNITY CONNECT	13



2025 Budget

No Increase for General Municipal Tax Rate

THE 2025 FINAL BUDGET AND TAX RATE WAS ADOPTED BY COUNCIL ON MAY 13, 2025.

The 2025 Final Budget of \$280,343,390 includes the Yellowhead County municipal budget, the school taxes, and the Evergreens Senior's Foundation taxes. There is no municipal tax rate increase in 2025 for the general municipal tax rates for Yellowhead County.

Overall assessment in Yellowhead County increased from \$11.4 billion to \$13.4 billion versus the 2024 budget; this equates to \$11.9 million in additional revenue from taxation. As a result of the overall assessment increase, the increase to the 2025 municipal mill rate is 0%.

The general municipal rates* are:

2.3755 for Residential & Farmland*

6.1510 for Non-Residential*

*(these do not include the school or senior tax rates)

Revenue Sharing:

The revenue-sharing amount that Yellowhead County provides to the Town of Edson and the Town of Hinton will see a 27.84% increase (from 2024 Final Budget to 2025 Final Budget) as a result of this higher assessment.

Revenue sharing amounts increased by just over \$2 million with \$1.4 million allocated to Edson and \$640 thousand allocated to Hinton.

Amount for Edson:

\$6,302,889

Increased 29.10% from \$4,882,129 2024 Budget

Amount for Hinton:

\$3,154,654

Increased 25.39% from \$2,515,816 2024 Budget

Revenue Sharing Agreements Total for Edson & Hinton

Total \$9,457,543

Increased from \$7,397,945 - 2024 Budget

Operating Expenses

Operations	55,095,380
Revenue Sharing Agreements	9,457,543
Contribution to local governments and grants	2,930,748
Contributions to reserves	12,475,658
Designated Industrial Property requisition	777,590
School requisition	30,191,921
Seniors requisition	6,586,787
Total	<u>\$117,515,627*</u>

*Does not include amortization amount

Amortization - non cash item \$23,799,757

Total Operating Expenses **\$141,315,384**

Capital Expenses

The 2025 Final Budget includes \$139 million in capital projects, of which \$83 million are projects that have been carried forward for completion from prior years, and \$56 million of new funds for 2025 new projects.

Capital projects, as presented under the 2025 Final Capital Budget, can be classified as follows:

Replacement: the replacement of an existing asset that the County currently owns and has reached or is reaching the end of its useful life.

Rehabilitation: where the core asset remains, however work is being completed to bring it to 'like new' condition.

Upgrade: an upgrade to an existing asset already owned and used by the County. This can be done to provide added efficiency, and/or realignment to a change in standard or code.

New: the acquisition or construction of a new asset that the County has not previously owned. Generally new assets have an impact to the level of service provided. The lifecycle costs should be taken into consideration when looking to acquire or construct new assets.

Partial list of Capital Projects on next page. ---->

YOUR COUNCIL



Mayor Wade
Williams
Yellowhead
County



Councillor Patrick
Soroka
Division 1
Evansburg & Area



Councillor
Anthony Giezen
Division 2
Wildwood & Area



Councillor
Penny Lowe
Division 3
Niton/Carrot
Creek Area



Councillor
David Russell
Division 4
Shiningbank, Peers,
Rosevear Area



Councillor
Shawn Berry
Division 5
Pinedale/Wolf
Creek Area



Councillor
Brigitte Lemieux
Division 6
Edson & Area



Councillor
Dawn Mitchell
Division 7
Edson West Area



Councillor
Ken Groat
Division 8
Robb, Cadomin,
Brule & Hinton Area

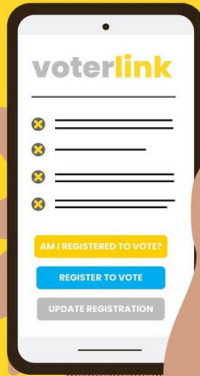
2025 Capital Projects

These are a few of the Yellowhead County infrastructure capital projects for 2025.

Funding for several of these projects come from federal and provincial funding such as the LGFF (Local Government Fiscal Framework), CCBF (Canada Community Building Fund), the Universal Broadband Fund as part of the federal ISED (Innovation, Science and Economic Development Canada), and Investing in Canada Infrastructure Program (ICIP).

Capital Project	Additional Information	2025 Budget (\$)
YCE Multiplex	Joint Municipal Recreation Facility	29,488,208
Towers		2,104,902
PS24-018 Universal Broadband Project	County contribution: \$17,792,532 More details: Community Connect on page 13	26,207,530
2024 Fireguard Program		2,566,540
Brule Fire Smart Vegetation Management	Grant	211,234
FireSmart Sprinkler Plans for all Hamlets	WUI FRIAA Grant	210,100
YCF-23 Fire Engine	25 years Replacement	2,299,567
YCF-54 Fire Engine	25 years Replacement	1,998,765
Robb Water Storage Tank	Install 14,000 gallon fire water storage tank	300,000
Zumero Command Tent	Emergency response and deployment	105,000
Peers Firehall	Purchase and renovation of building	2,000,000
Document Storage Facility	Documents and records	200,000
Outdoor Rink Boards	Replacement for Marlboro and Niton	70,000
Peers Rink Hydrant	Rink flooding at the Peers Multiplex	35,000
Tipple Park Museum & Library	Renovations	1,550,000
Robb Multiplex Sound System		35,000
Trail Development		100,000
Marlboro Kitchen Renovations	Commercial Kitchen Upgrade	500,000
Dock Float Replacements	Lifecycle replacement phase 2	70,000
BF07552 Replacement	Range Road 170 Bridge	3,724,690
Marlboro Ball Diamond Upgrade	Replace grass infield with shale	125,000
Wildwood Complex Arena	Curling slab replacement	450,920
Cadomin Hall	Commercial kitchen upgrade	500,000
Marlboro Sewer/Lagoon		7,401,580
Marlboro Water/Sewer		5,304,487
Evansburg Street Improvement	Engineering and construction	6,339,901
BF71009 Replacement	Twp Road 534 Culvert	965,929
Long Lake Road Embankment Slope Failure		692,000
Transfer Stations Marlboro & Peers	Power, lights, and cameras	196,833
Grader Replacement	Replacement of two graders	1,550,000
Range Rd 144A	South of Twp Road 541 Rebuild	408,819
Twp Road 544	East of Hwy 32 Rebuild	2,200,000
Special Project	Total project cost over 2 years: \$25.6 million Total grant: \$16.8 million Total County Contribution: \$8.6 million	12,000,000
Community Preparedness & Response Assets	Red Cross Preparedness & Stock Prepositioning	60,000
Wildland Equipment	Donation from Global Medics	23,000
CN Crossing Improvements	53 Avenue, Robb	150,000
Twp Road 542	Hwy 748 to Range Road 165 Pave	10,000,000
Evansburg Lots Cul-de-sac Expansion	Engineering and construction of 10 lots	785,463
West Yellowhead Regional Waste Management Authority Landfill	Various projects	1,107,189
Robb and Cadomin Backup Utility Generators		480,000

YOUR VOTE MATTERS



Voter Registration

Voters will need to register for the 2025 Yellowhead County Municipal Election.

- All voters in Yellowhead County must be on the permanent Electors Registry.*
- To register or check your registration status, visit the Voterlink website.
- Yellowhead County receives its list of eligible voters from Voterlink, so please confirm your information is correct to ensure you're ready to vote.

- Deadline for registering to vote is September 15, 2025.

- *If you do not register before the deadline, you will still be able to vote. You can register at the voting station on Election Day.

Pre-registering will just make the voting process faster on Election Day.



To register or check registration:

www.voterlink.ab.ca

www.ycvotes.ca

Important Election Dates:

- X Nominations open January 1, 2025 to run as a candidate.
- X Nominations Close: September 22, 2025, at 12:00pm
- X Advance Polls will take place in Edson, Hinton, and Wildwood prior to the final election date.
 - October 4 - Edson
 - October 11 - Hinton
 - October 11 - Wildwood
 - October 18 - Edson
- X Special Ballots - Must be received by 4:00 PM on October 20, at the Yellowhead County offices in Edson or Wildwood.
- X Election Day: October 20 10:00 AM to 8:00 PM
Yellowhead County municipal voting take place at various locations in Yellowhead County.
- X Official Election Results: October 24, 2025

Yellowhead County Municipal Election 2025



Thinking of running in the upcoming Municipal Election? Here are some things to consider:

Nomination period to run as a candidate:

January 1, 2025 to
September 22, 2025.

Yellowhead County
Municipal Election is
October 20, 2025.

- Must be at least 18 years of age on nomination day.
- Must be a Canadian citizen.
- For position of Mayor, you must have been a resident of Yellowhead County for the six months preceding nomination day.
- For position of Councillor, you must have been a resident of the electoral division of Yellowhead County for which you intend to run for the six months preceding nomination day.

A Candidate Nomination Package is available at both Yellowhead County offices and online.

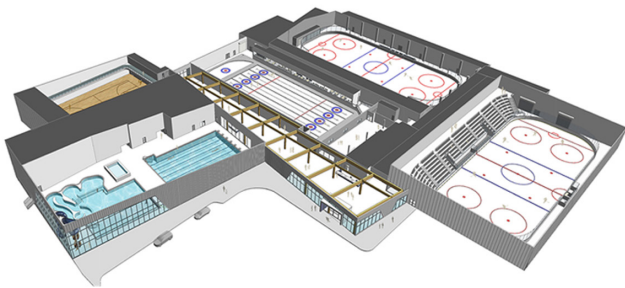
www.ycvotes.ca

YCE Multiplex:

Groundbreaking and Construction Updates

A joint initiative between the Town of Edson and Yellowhead County is one step closer to becoming a regional staple, with detailed designs for the YCE Multiplex officially approved and the official groundbreaking ceremony held.

The innovative design, which breathes new life into the current Edson and District Leisure Centre, has received the thumbs-up, a four-phase construction plan is in the books, and construction is now underway!



“This groundbreaking is an important milestone in the completion of the new YCE Multiplex,” said Yellowhead County Mayor Wade Williams. “We’re very proud of our work together with the Town of Edson in the developments of this facility. The facility’s new amenities and upgrades will benefit our region’s residents and highlights our commitment to working with our regional partners towards our community’s continued growth and development.”

Phase 1 commenced April 7, 2025, with on-site preparation and foundational work. This includes clearing the area, grading the land, and preparing the foundation. This phase will be completed in summer 2025.

Notably, this initial phase of construction will also focus on accommodating ongoing use of the existing Edson and District Leisure Centre throughout construction – a unique step advocated by both municipalities to ensure there’s no gap in access to recreational opportunities for residents.



Yellowhead County Council and Edson Town Council commemorated the start of construction of the YCE Multiplex with a groundbreaking ceremony on May 21, 2025.

Phase 2 of the project will include the construction of a new ice arena and aquatics area, including lane and leisure swimming. From there, Phase 3 will incorporate the construction of a new lobby and a gymnasium that includes an elevated walking track; and Phase 4 will see project completion through renovations to the current Centennial Arena and the conversion of the Memorial Arena to a new curling facility, as well as final site servicing.

The YCE Multiplex Project construction began this spring, with the official construction groundbreaking event on May 21, 2025 and an anticipated completion of late 2027.



YCE Multiplex Exterior



New Ice Arena



Aquatics Area



Curling Rink

YCE MULTIPLEX CONCEPTUAL DRAWINGS

Check out conceptual drawings of the YCE Multiplex Project website at ycemultiplex.ca. The site is a focal point for all information about the new YCE Multiplex with regular updates on construction progress as the project takes shape.

Generations Connect: An Intergenerational Pen Pal Program

County residents build meaningful friendships through an exciting initiative from Yellowhead County Family and Community Support Services (FCSS) that offers a unique exchange of wisdom, stories, and friendship.

Yellowhead County's FCSS team provides several programs and services for our residents - from family and youth services to community and seniors outreach, as well as home support, grants, and resources.

One such program is Generations Connect, which pairs individuals from different generations who then become "pen pals" and write letters back and forth. The program recognizes the power of connections across generations and aims to "bridge the gap and create lasting bonds."

FCSS' work with youth is grounded in the research of the Search Institute which includes a framework of 40 Developmental Assets that are recognized as essential building blocks to "help young people grow into healthy, caring, and responsible individuals."

Sierra Goddard, Youth Services Coordinator, explained that the pen pal initiative aligns closely with one of the core asset categories: Support. "Supportive relationships with non-family adults are critical to youth development," said Sierra. "The pen pal program offers an opportunity for youth to form consistent, positive relationships with adult role models in the community."

The program currently includes four active matches, with three older adults corresponding with four junior high students from Entwistle School. "I meet with the students weekly to support them in writing letters to their pen pals," said Sierra, adding that since the program's start in January, a total of 58 letters have been exchanged.



Sierra was "very purposeful" with matching and paired the individuals based on their personalities and who she thought would "click the best." Her methods have proven successful, especially in the pairing of

12-year-old Elle Tyler and Shiningbank senior Jane Henry.

Jane heard about Generations Connect from a newspaper ad and the monthly FCSS newsletter and felt that it would be "perfect" for her. "I've always loved writing letters, and I don't get an opportunity to do it that much anymore because of email," said Jane. "And I just thought it was really an excellent idea to have kids have the experience of getting a letter and actually writing a letter."

Students send the first letter as an introduction, and from there the matches write back and forth. "[Elle] asked me really cute questions... and we started basing our getting to know each other relationship on her questions," said Jane. "I thought that was a really clever way of doing it."

The pair quickly noticed that they had some things in common, like their love of potatoes and a passion for reading.

"It's been a really fun experience. Every letter is a surprise."

– Jane Henry

"My favourite book is The Maze Runner, and we got talking about books around our second letter, and I told Jane that I really liked it," said Elle. "And then

the third letter she told me she was taking the books out of the library, and she started reading the Maze Runner series."

Handing Elle that third letter was a special moment for Sierra, and watching Elle's face light up is her favourite memory of the program so far.

"I hadn't heard of [The Maze Runner] before, because that's kind of not the genre I read, they're a little brutal," laughed Jane. "The first book, it was like, oh my goodness. Then [Elle] said, 'I can't wait until you start the second book.'"

Now committed, Jane continued to read the series, and the books quickly became a "central theme" of the pair's letters.

"It's not going to be a genre that I choose as my favourite... but it was fun sharing it with her. I can learn from anything I read," said Jane. "[Elle] has a really wide range. Like, she read The Maze Runner, and she also read Pride and Prejudice. So, we'll see if we can share some more reading."

When asked about the most rewarding part of the program, both Jane and Elle talked about their connection.

"It is really wonderful that we're connected because both of us look forward to these

letters," said Jane. "It's been a really fun experience. Every letter is a surprise."



"Making new connections and having this connection with someone that I didn't know before... it's a really good idea," said Elle.

Elle and Jane also agreed that they would highly recommend the program to others.

"You might not get this opportunity at another school. This is a really unique thing," said Elle. "It's a really good idea. You can meet new people... it's really fun."

"I would definitely recommend the program.

"Every letter makes me smile... It's just a joyful experience, really. Sierra's program is just super."

– Jane Henry

It's very exciting to know how young people think and what they find important and interesting now," said Jane. "And you can only do that if you're

talking with young people, and some people might not have an opportunity to be with many young people. It increases your world. Every letter makes me smile... It's just a joyful experience, really. Sierra's program is just super."

The pair plan to continue with their letter writing, even as Jane heads off on an international trip. While she's away, Sierra will facilitate their letter-sharing through email.

Despite having never met, the friendship and connection between the two has become something special and will continue to grow thanks to the Generations Connect program.

The program is accepting more senior writers right now (age 55+) and will accept more youth writers in the future. For more information, contact Sierra at sgoddard@yhcounty.ca or 780-325-3782.

Lost Historical Locations

The Forgotten US Army Base at Chip Lake

American troops get world-class Arctic survival training, in what would later become Yellowhead County, on their way to Siberia.

During the Second World War, the United States enacted the Lend-Lease Act. This act provided the U.S. with food, oil, and, more notably, equipment for many countries, including the Soviet Union.^[1] Almost 8,000 aircraft from the United States were sent to Siberia through the ALSIB route (ALaska-SIBeria). This route went from Great Falls, Montana, to Siberia, USSR. Eventually, these aircraft ended up on the eastern front.^[2]



Air Transport Command pilots from the U.S. Army Air Corps (the US Air Force was not formed until 1947) ferried the aircraft over some of the most remote locations in Canada

and the United States. Battling with various winter storms meant that many pilots had crash landings and succumbed to the elements.

Small caches were built every 40 to 50 miles along the ALSIB route to ensure pilots were given the resources needed to survive. If a pilot crashed, they were no more than 25 miles from a cache. These caches were simple log cabins with no windows, about 20 feet by 20 feet on the inside walls. Inside the caches were food supplies, cots, snowshoes, sleeping bags, fuel, first aid kits and rifles.

While these caches helped reduce mortality rates, there was a bigger problem—the pilots had no Arctic survival training to make the trip.



Zeke, commonly known as the "Gopher" On account of he lives in a whole, the dugout in the background.

The first Army Air Corps Arctic survival school was initially activated at Camp Williams, Wisconsin, in 1942 and eventually moved to Echo Lake, Colorado, in 1943. The instructors for this program

were the best in Arctic survival: Allan Innis Taylor, a renowned survivalist who earned two congressional medals and a Carnegie Life Saving Medal; Belmore Browne, a famous landscape artist and

mountaineer who was part of the first group to summit Mount Washington



While these caches helped reduce mortality rates, there was a bigger problem—the pilots had no Arctic survival training to make the trip.

and part of the famed failed ascent of Mount Kinley; and finally Vilhjalmur Stefansson, notable Arctic explorer and ethnologist. These instructors trained six men, including Clyde Clymer, to teach the Air Corps at a satellite camp south of Chip Lake, Alberta, close to the ALSIB route. The camp was located south of modern-day Highway 16, on the west side of RR 105.^[3]

We can thank Clyde Clymer for today's photographs of the Chip Lake Army Air Corps Camp. As film was scarce during the war, Clyde used X-ray film to produce the images.

The camp was fully operational for around four years before it was abandoned. The forest overgrowth has destroyed almost all evidence of it.



There is no mention of the Arctic Survival School in any local history book, and oral histories about the camp are few and far between; however, some old-timers have memories of American soldiers coming to local dances. Newspapers also mention the US Forces helping to find a local young woman, Nancy Sedin, who went missing at Chip Lake.^[4]

A big thank you to Tom Lutyens, who helped with the camp research and initially took Clyde Clymer's oral history.

[1] National Archives. 2021. "Lend-Lease Act (1941)." National Archives. September 21, 2021. <https://www.archives.gov/milestone-documents/lend-lease-act>.

[2] "The ALSIB Air Route." n.d. Russian Geographical Society. <https://www.rgo.ru/en/projects/expeditions/alsib-air-route>.

[3] Clyde Clymer oral history, provided by Tom Lutyens to Yellowhead County Heritage Program.

[4] Edmonton Bulletin, July 13, 1945, 'Lost Twelve Days in Wilderness'.

SUMMER EVENTS IN THE COUNTY!

Events begin at 5:30 PM
Ages 3-13* \$15
FREE BBQ



Save the date!
SWIM! BIKE! RUN!
Registration is OPEN!

BEAR CHASE TRIATHLON July 17 at Bear Lake



2025 Register early to get a **FREE T-shirt!**

Register at yhcounty.ca/registration, or in-person at Yellowhead County offices, or call 780-723-4800.
For more information, email jmateri@yhcounty.ca



COME MEET YOUR RURAL NEIGHBOURS!
Join other visitors to see some of the best farms in our region.
AUGUST 16 & 17!



ALBERTA OPEN FARM DAYS
AUGUST 16 & 17, 2025

VISIT THE FARMS!
Alberta Open Farms Days brings Albertans together through educational and experiential agricultural-based initiatives to learn where your food comes from.
More information at: www.albertaopenfarmdays.ca



HERITAGE BUS TOURS
9am to 3pm

JUNE 14 East
JULY 26 West
AUGUST 16 South (Coal Branch)

\$35 PER TOUR
Lunch included
Some tours include light hiking.
Various bus pick-up locations.

Call 780.325.3782 for more info.

Yellowhead County

YELLOWHEAD COUNTY COMMUNITY RECREATION GRANTS

GRANT DEADLINES: QUARTERLY
March 31, **May 31**, September 30, December

Community Hall/Outdoor Amenity Capital Assistance Grant
Registered non-profit groups will be eligible to apply for funding assistance with capital projects which could include renovations, repairs, furniture & equipment purchases, new facility, new outdoor amenity, etc.

Recreation Program & Event Grant
Registered non-profit groups will be eligible to apply for funding up to \$2200 for programs and events that provide cultural, fitness, sport and/or other recreational opportunities to the community.

Recreation & Culture Initiatives Fund
Registered non-profit groups will be eligible to apply for funding for new initiatives in recreation and culture facilities, programs and services that will have ongoing benefits to the community.

Applications can be found at www.yhcounty.ca or picked up at the County offices in Edson or Wildwood. Please call the Yellowhead County Parks and Recreation Supervisor for more information at 780-723-4800.

Registration Now Open!

www.yhcounty.ca/registration

County Kids

AWESOME ADVENTURE CAMPS

AGES 6-11 * \$20/week (or \$5/day)

Wild West Wonders



July 7-10 9:30 AM - 3:00 PM Niton Community Hall	July 28-31 9:30 AM - 3:00 PM Wildwood Community Hall
July 14-17 10:00 AM - 2:30 PM Marlboro Community Hall	Aug 5-7 10:30 AM - 2:30 PM Brule Community Hall
July 21-24 9:30 AM - 3:00 PM Peers Multiplex	Aug 11-14 9:30 AM - 3:00 PM Entwistle Community Hall

Curiosity Camp



July 7-10 9:30 AM - 3:00 PM Wildwood Community Hall	July 28-31 9:30 AM - 3:00 PM Niton Community Hall
July 14-17 10:00 AM - 2:30 PM Robb Multiplex	Aug 5-7 10:00 AM - 2:30 PM Marlboro Community Hall
July 21-24 9:30 AM - 3:00 PM Entwistle Community Hall	Aug 11-14 9:30 AM - 3:00 PM Peers Multiplex

Adventure Play Camps!

Cost: \$5

Ages 3-5*

*Children must be potty-trained to attend.

FARMYARD FRIENDS



July 8 10:00 AM - 1:00 PM Peers Multiplex	July 17 10:00 AM - 1:00 PM Niton Community Hall
July 10 10:00 AM - 1:00 PM Entwistle Community Hall	July 22 10:00 AM - 1:00 PM Marlboro Community Hall
July 15 10:00 AM - 1:00 PM Wildwood Community Hall	July 24 10:00 AM - 1:00 PM Robb Multiplex

BEACH BLAST



July 29 10:00 AM - 1:00 PM Peers Multiplex	August 7 10:00 AM - 1:00 PM Niton Community Hall
July 31 10:00 AM - 1:00 PM Entwistle Community Hall	August 12 10:00 AM - 1:00 PM Marlboro Community Hall
August 5 10:00 AM - 1:00 PM Wildwood Community Hall	August 14 10:00 AM - 1:00 PM Robb Multiplex

Livestock ID:

This important tool could be vital for livestock identification during a disaster.

“Premises Identification (PID) is a tool used to plan for, control, and prevent the spread of livestock and poultry disease, such as avian influenza or foot and mouth disease. It is crucial for the livestock industry in the event of an animal health incident,” says Dr. Keith Lehman, chief provincial veterinarian with the Alberta government. “The quicker we can locate livestock, the more quickly and accurately we can respond. In fact, PID has been used heavily over the past several years to help control the spread of avian influenza and disseminate information to poultry owners in the province.”

PID links livestock and poultry to premises, which are land locations within the PID system. Having accurate animal locations, contact information and other key data in one system is critical for a quick and effective emergency response. The system has become increasingly important

for planning and response to environmental disasters like the floods and wildfires seen in recent years, further supporting the need to have accurate contact information and information about the animals on your premises.

“Effective emergency response and the ability to protect your animals depends on accurate information. It is important that you update your PID account when there are changes to your operation (for example, contact information, species, and maximum capacity) or if you no longer have livestock on your premises. Inaccurate and outdated information can put your animals at risk during an emergency by delaying notification or delivering an incorrect response from emergency responders.”

Learn more at www.alberta.ca/agri-news-keep-your-premises-identification-account-up-to-date.

Horticulturalist Technician

Need Tree & Garden Advice?

Yellowhead County has a seasonal Horticultural Technician for the upcoming season to assist with horticultural related questions or concerns you may have regarding your property.

- Tree and Plant identification
- Tree and plant disease or pest identification and recommendations or referrals
- Tree pruning advice.
- Garden Soil Testing for the upcoming season.
 - Garden Soil sampling provides a basic range result for pH, Nitrogen, Phosphorus and Potassium
 - Limit of 1 garden soil sampling per household
 - Testing is on a first-come, first-serve basis and is subject to availability of testing supplies. *Priority is given to gardens that are exhibiting growth concerns.

Contact the Yellowhead County Agricultural Services Department for inquiries or to set up an appointment with the Horticultural Technician. 780-325-3782 or 1-800-814-3935

ASK OUR RESIDENT EXPERT! DO YOU HAVE TREE & GARDEN QUESTIONS?

Yellowhead County has a new seasonal Horticultural Technician to answer your tree and garden questions and concerns.

TREE & PLANT IDENTIFICATION

TREE PRUNING ADVICE

GARDEN SOIL TESTING

Testing for the upcoming season:

- Garden Soil sampling provides a basic range result for pH, Nitrogen, Phosphorus and Potassium.
- Limit of 1 garden soil sampling per household.
- Testing is on a First come, first serve basis and is subject to availability of testing supplies.
- *Priority is given to gardens that are exhibiting growth concerns.

TREE & PLANT DISEASE ID

Disease or pest identification and recommendations or referrals

Contact Yellowhead County Agricultural Services Department at **1-800-814-3935** or **780-325-3782** for inquiries or to set up an appointment with our Horticultural Technician.

Naming the Land:

How places in Yellowhead County got their names

Across Yellowhead County, a unique and meaningful initiative is unfolding—one that brings the stories of our landscape to life. Led by the Heritage Department in partnership with local historical societies, the Naming the Land project is an ongoing effort to document and preserve all place names throughout the municipality, both official and unofficial.

From the well-known rivers and mountain peaks to lesser-known valleys and settlements, every name in Yellowhead County holds a story. These names serve as connections to the land, the people who once lived here, and those who continue to call this region home. Through a series of

presentations hosted throughout the County, residents have been invited to learn, reflect, and contribute to this living historical document.

The newly released draft of the Naming the Land book is the result of extensive research and collaboration. Many of the names recorded in the book stem from Indigenous languages, early European explorers, railway expansion, and the legacy of settlers and industries that shaped the area. Whether rooted in Indigenous oral traditions or linked to the era of coal mining and forestry, each name tells a tale of survival, change, and remembrance.

This is an evolving project, and the County welcomes community input. Residents are encouraged to share local stories, suggest corrections, or contribute additional research. Every piece of knowledge helps build a fuller, more accurate picture of our region's history.

As the Naming the Land book continues to grow, so too does our collective understanding of what these names mean and why they matter. Together, we can honour the histories of Yellowhead County, ensuring they are preserved and passed down for generations to come.

Below are three examples of some of the locations from the document which includes hundreds of examples of how places in Yellowhead County got their name. For more information, or to contribute to the project, please contact the Yellowhead County Heritage Department at facebook.com/YCHeritage or by calling 780-325-3782.

À LA PÊCHE LAKE

It comes from the French phrase 'to go fishing,' presumably highlighting the abundance of fish at this location. The name was federally recognized in 1947.

MUSKIKI LAKE & CREEK

Originally called Medicine Lake, which refers to the calcium and magnesium surrounding the bog. Confusion with other Medicine Lakes led to the adoption of Muskiki, Cree for medicine.

WILDHAY RIVER

The meadows along the river are full of wild hay. These sites are where the great spirit's footsteps flattened the earth. The wild grass in these sites provided food for Indigenous and European horses.



Kindred Spirits

Evansburg Cemetery Marks 100 Years of History, Heritage, and Heart

Saturday, July 12, 2025

1:00 PM - 3:00 PM

Stop by the Evansburg Cemetery during Pembina Valley Daze!

- Reconnect with friends and family
- Self-guided walking tour
- Cemetery information
- Flowers for sale (cash only)
- Refreshments

This summer, a unique milestone will be commemorated in the heart of Yellowhead County. On July 12, from 1:00pm to 3:00pm, the community is invited to celebrate 100 years of the Evansburg Cemetery—a peaceful space that holds more than memories.

But before it was a cemetery, this land was once a bustling subdivision known as Arnupville, named after Arthur W. Arnup, the visionary behind the early development. At one time, homes dotted the area now reserved for reflection and remembrance. Echoes of that past still linger in the caragana hedges, fragments of concrete foundations, and unexpected artifacts that occasionally surface—like the vintage adding machine that will be featured in a special cemetery exhibit at Tipple Park Museum this summer.

The centennial celebration, “Kindred Spirits: A Century of the Evansburg Cemetery,” is more than just a tribute to the past—it’s a chance to reconnect with community, heritage, and loved ones. Over the past four years, the cemetery has seen significant enhancements, including a columbarium, leveled headstones, a serene lookout and memorial trail, and the installation of a ‘wind phone’—a quiet, symbolic space for visitors to speak to those they’ve lost, carried only by the wind.

Guests are encouraged to take part in a self-guided walking tour, purchase flowers (cash only), and learn more about the cemetery’s future plans. Whether you’re coming to pay tribute, explore local history, or simply reflect, this gathering promises to be a meaningful afternoon of connection and remembrance.

For more information please contact the Yellowhead County Heritage Department at facebook.com/YCHeritage or by calling 780-325-3782.



Community Connect

Rural Communications Plan

COMMUNICATIONS TOWERS SPRING 2025 UPDATE: RURAL COMMUNICATIONS PLAN

Starting in 2011, Yellowhead County has been growing internet and connectivity throughout the municipality, from east to west and south into the coal branch. These developments have benefited communities, industry, and emergency and protective services.

From County-supplied fibre into homes, to County-supplied wireless into homes in remote subdivisions, to faster wireless and internet options for rural living and less-served areas, Yellowhead County is more connected every year in areas where broadband service has been completed.

This initiative is made up of four key parts:

- An increase in cellular coverage for County residents, visitors, and industry. Yellowhead County has worked with Telus to locate cell sites on Towers in Wildwood, Peers, and Cadomin, and is having continued conversations to add more sites to more County Towers with multiple internet service providers.
- An increase in broadband and high-speed internet opportunities for service providers, resulting in better internet options for County residents.
- Better connectivity for County staff and protective services.
- An increased early warning wildland fire detection system and live, real-time fire detection system.

Several new towers have been built over the last year and provide more high-speed internet access options to homes using Fiber Optic and Fixed Wireless technology. This translates into more service opportunities for internet service providers to come into our less-served areas, resulting in more high-speed access to County residents and businesses.

To date, Yellowhead County has installed 20 new towers in underserved

areas across the County with funding assistance from government grants.

Our landscape now includes towers in Bunker Hill, Wildwood, Peers, Fulham, Emerson, Edson (pictured), Robb, Obed, Cadomin, Aspen Heights, Brule, Carldale, Mountain View, 748 East, Mary Reimer Park, Obed Community Site, Shinning Bank, Niton Junction, Branch Corner, and Cold Creek, with six additional towers under construction. “We’re excited to see the progress of increased reliable and faster internet service for the residents in Yellowhead County,” said Mayor Wade Williams.

You can sit in on a zoom meeting and not get kicked out due to lack of connectivity, students will have the opportunity to get the education they need from a remote location, emergency services will have a communications network for emergency services, and internet service providers will have a network to deliver their services.

FEDERAL & PROVINCIAL PARTNER FUNDING: The Universal Broadband Fund (UBF) and the Rapid Response Stream

“We’re excited to see the progress of increased reliable and faster internet service for the residents in Yellowhead County,”

- Mayor Wade Williams

This funding enables Yellowhead County to continue to build an expanding open network that any service provider can use to provide services to County residents and industry. The goal is to get fibre connections to as many households as possible and create new wireless options where fibre is not an option.

This network will be an entirely new system and will not use old, unsupported, and outdated infrastructure already in place.

“We’re continuing to apply for more grant funding to bring more connectivity across the county. Hopefully there will be more exciting news for the County to announce in the coming months,” added Williams.

County residents and businesses, however, must still rely on commercial cellular and internet providers for these services. Yellowhead County has made it easier for internet service providers to bring their coverage to our communities, but it’s still up to them to see this enticing business opportunity.



YCFD's All-Terrain SHERP

The SHERP all-in-one Rescue Vehicle

In 2018, the Yellowhead County Fire Department started looking for a multi-purpose all-terrain vehicle to aid in YCFD operations. "Many different vehicles were tested over several years," said YCFD Fire Chief Albert Bahri. "The one vehicle that stood out was the SHERP."

SHERPs offer a unique combination of mobility, versatility, and efficiency, offering a fully-enclosed, climate-controlled cab system that is rollover-protected, and they can safely transport equipment, personnel and patients from remote locations in any weather or season. Also able to traverse water bodies, SHERPs are a valuable asset for emergency services, particularly in search and rescue operations.

With their amphibious capabilities, they are uniquely designed to access and navigate rugged terrain, including mud, rocky terrain, bogs, snow, ice, and even deep and flowing water. It has a top speed of 30 kilometres per hour on land, which drops to 6 kilometres per hour in water. It can overcome obstacles of up to 1.5 meters.

In the 2021 Lobstick Wildfire, YCFD pressed a SHERP into service for access to the fire, and it was used to respond to the fatal helicopter crash that occurred during that fire.

During the 2023 wildfires, several SHERPs were pressed into service to provide access, crew transportation, and a fully rollover-protected cab system for medical transport.



And when those 2023 wildfires turned to floods, the SHERPs were used not only to rescue residents trapped by water, but also to transport crews in safely so that they could place damming to protect resident's homes.

The YCFD SHERP is customized in the interior to transport emergency crews and cargo, and it has a secure stretcher area for injured people. The practicality and purpose-built design is an excellent asset for YCFD operations.

What's a WEP?

A great once in a lifetime opportunity

The Yellowhead County Fire Department (YCFD) Work Experience Program (WEP) is designed to offer new graduates from accredited fire schools the opportunity to gain experience that will help them build a career in firefighting.

The successful WEP firefighter will have a year with YCFD which includes a dynamic range of calls, the building of career skills, and mentorship with our experienced firefighters through training and shift routines. This training will help WEP firefighters use and build upon skills acquired during their fire academy training. WEP firefighters will also be able to join Paid On-Call Volunteers outside of their shift rotation, which will provide additional experience and training opportunities.

Being a WEP firefighter provides knowledge and experience that fire departments in larger centres will be looking for in a new recruit's application.

WEP firefighters are placed on a platoon where they join existing fulltime staff in a scheduled rotation covering Yellowhead County 7 days a week.

As part of the program, WEP firefighters will also be asked to volunteer within the community, in schools, and during community events.

The combination of obtaining work experience and personal development through the program will assist you in becoming a noticed candidate during recruitment processes.



Part of the WEP program involves educating and engaging with community members during events. (Photo: Fire Prevention Week Open House)

IN THE EVENT OF AN EMERGENCY... Are You Prepared?

Emergency Kit Checklist

Being ready for an emergency makes a difference. Large-scale emergencies that have occurred in Alberta over the past 20 years includes tornadoes, train derailments, sour gas leaks, wildfires, floods, severe storms, and more. Having an emergency kit can help reduce the stress of making important decisions in emergency situations.

Food & Water

- ☐ Water (4L per person per day)
- ☐ Non-perishable food with high protein
- ☐ Trail mix/dried fruit
- ☐ Crackers and cereals
- ☐ Canned meat, fish, and beans
- ☐ Canned/boxed juice

Clothing & Bedding

- ☐ Change(s) of clothing [season appropriate]
- ☐ Extra undergarments and socks
- ☐ Raincoat, poncho, jacket
- ☐ Spare shoes
- ☐ Sleeping bag, blanket

Equipment

- ☐ Manual can opener
- ☐ Dishes and utensils
- ☐ Battery-powered or crank radio
- ☐ Extra batteries
- ☐ Pen and paper
- ☐ Pocket knife
- ☐ Duct tape
- ☐ Whistle
- ☐ Cell phone
- ☐ Extra charging cables and batteries
- ☐ Multi-tool and work gloves

Personal Supplies & Medication

- ☐ First-aid kit
- ☐ Personal hygiene supplies
- ☐ Tissue paper, toilet paper, paper towels
- ☐ OTC and prescription medications
- ☐ Copies of prescriptions
- ☐ Prescription glasses
- ☐ Pet food and supplies (including toys)
- ☐ Liquid detergent and soap
- ☐ Plastic wrap, aluminum foil, re-sealable bags
- ☐ Garbage and recycle bags
- ☐ Hand sanitizer and wipes
- ☐ Disposable dust and non-medical masks

Light

- ☐ Battery-powered or crank flashlights/lamps
- ☐ Candles with candleholder
- ☐ Lighter
- ☐ Waterproof matches

Documents & Identification

- ☐ Personal identification
- ☐ Copies of birth and marriage certificates, will, passports, citizenship papers
- ☐ Insurance policies
- ☐ Cash (small bills and change)
- ☐ Credit card information
- ☐ Copy of emergency plan
- ☐ Contact list
- ☐ Personal items, if time allows (photos, computers, heirlooms, etc)

Distraction and comfort items

- ☐ Small toys and stuffed animals
- ☐ Playing cards and games
- ☐ Reading material
- ☐ Activity books and puzzles
- ☐ Colouring books and markers
- ☐ Charging cords for electronic devices
- ☐ Notebook and pen
- ☐ Family photos

Don't forget to consider additional items you may need in your kit.

Those pregnant, breastfeeding, with infants or small children, mobility issues, specific cultural/religious/spiritual needs, severe allergies or dietary restrictions, chronic medical conditions or medical equipment, etc may need extra supplies. Make a list and be prepared!

Make a mini kit!

- ☐ Small amount of cash
- ☐ Phone charger
- ☐ Package of wipe/tissues
- ☐ Painkillers and backup medication
- ☐ Water

Make an Emergency Plan

Have a plan in place for your family. Sit down and discuss safe exits from your home and neighbourhood, meeting places to reunite, designated persons to pick up your children if you're unavailable, contacts both close-by and out-of-town, health and insurance information, places for your pet to stay, and the location of things such as fire extinguisher, water valve, electrical panel, emergency kit, etc.

Behind every first responder is a family waiting for them to come home.



Please move over and slow down or stop for emergency vehicles!

Let's all get home safely.

Assessors in Yellowhead County

Accurate Assessment Group Ltd. is contracted by Yellowhead County to handle all Residential Inspections. They work year-round assessing properties.

Here are a few things that residents should be aware of regarding AAG Assessors:

1. They all wear **identification lanyards** and if not, they **must produce identification upon request.**
2. They **must produce their letter of authorization** from Yellowhead County.
3. If you are not home, they **will leave a notice on the door** letting you know they were there.
4. All Accurate Assessors **vehicles are marked with this logo** on their vehicle doors:



If you have any concerns regarding this matter, please contact the Yellowhead County office at 780-723-4800.

Yellowhead County

Cover photo: Long Lake, Yellowhead County
Courtesy of Nancy Brochu

Feel free to contact Yellowhead County's Chief Administrative Officer or General Managers with questions, concerns, or comments.

Luc Mercier

– Chief Administrative Officer

Albert Bahri

– General Manager of Protective Services

Jeffrey Morrison

– General Manager of Corporate Services

Crystal McNernie

– General Manager of Community Services

Cory Armfelt

– General Manager of Infrastructure & Planning Services

Yellowhead County

780-723-4800

1-800-665-6030

Fax: 780-723-5066

Office Locations

Edson Office (Main)

2716 - 1st Avenue

Edson, AB T7E 1N9

Hours of Operation

Monday to Friday

8:00 a.m. to 4:30 p.m.

Wildwood Office

53404 Rge Rd 92A

Wildwood, AB

After-Hours Emergency

Utilities, Bylaw, Transportation: 780-723-3221

Visit the Yellowhead County website at www.yhcounty.ca

