

Emergency Operations Centre Joint Training Exercise

TRAINING EXERCISE IN PROGRESS

A recent multi-organizational, large-scale emergency mock disaster exercise involving Yellowhead County, Edson and Environmental and Sustainable Resource Development (ESRD), took place to see how each organization would work together in this type of event.

The four hour exercise included 79 participants with backgrounds ranging from emergency services to municipal planning and transportation. During the exercise there were three separate Emergency Operations Centres (EOC) set up, as well as an Inci-

dent Command Post which simulated the front-line emergency responders that would be on-scene in a real emergency. In addition to the active participants there were also several observers from local industry, neighbouring communities and other government agencies.

ON THE SAME PAGE

The exercise was based on a national program that promotes consistency for everyone involved in emergency management training, from municipalities to provincial and national organizations that may have to interact in an emergency. The benefits of this framework include consistent training for personnel, improving inter-organizational coordination and communication, and being able to identify gaps in resources and training and areas for improvement prior to a real large-scale emergency.

A joint commitment from neighbouring municipalities, first responders, various provincial organizations, and local industry and businesses to work with each other is the first step in disaster planning that could help to save lives and property in an emergency.

From natural disasters to industrial emergencies there are a multitude of catastrophes that could potentially impact a community with serious consequence. "Planning how best to deal with a situation like this could mean the difference between bad and worse. Developing and practicing these plans puts you that much further ahead," assures Yellowhead County Fire Chief Cory Chegwyn.

A LEARNING OPPORTUNITY

The scenario and very detailed hypothetical situation was developed by all three partners, with assistance from Alberta Emergency Management Agency (AEMA). The exercise was designed to simulate how each organization would approach dealing with a wildfire that was threatening homes in Yellowhead County and near the Town of Edson. While this exercise was based on a very specific situation, the lessons learned and experienced gained by the participants add to the skills and knowledge needed in dealing with any sort of disaster.



the exercise coordinators, they also had to communicate effectively with not only their team in coordinating resources and analyzing information, but they also had to coordinate information effectively with the other EOCs and other external situations such as the media and external organizations including private industry and provincial ministries.

A QUICK SNAPSHOT

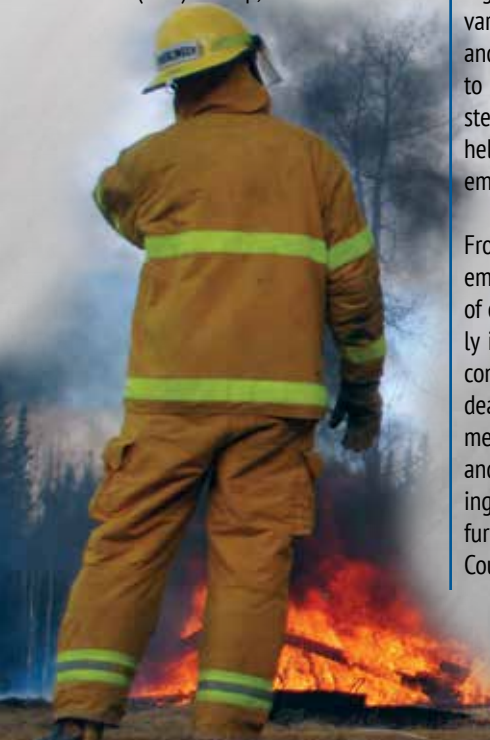
While an exercise of this sort does bring some of the stress and adrenaline that might be experienced in a real life situation of this type all the participants know that their decisions made during the exercise will not actually have any direct repercussions and is only part of a learning experience. In a real situation decision makers have to make some tough decisions that could affect people in many ways – going through this type of training is an effective way to be able to step back and analyze decisions that were made in the exercise and to see what effects it may have.

COORDINATION A PRIORITY

The exercise itself was done in a compressed time frame, contributing to the stress that affects any decisions that need to be made quickly and decisively in this type of situation. Each EOC was physically removed from each other and had to rely on inputs from the exercise coordinators that would give each team a snapshot of what was happening at that exact moment. While decisions had to be made in the EOC quickly to deal with new information that each team was receiving from

A LOOK INSIDE

ELECTION 2013	4
HERITAGE SURVEY	9
CHILD DEVELOPMENT	11
NO SPRAY PROGRAM	13
DOG CONTROL	14



2013 COUNTY BUDGET & TAX RATE SET

On April 9, 2013, Yellowhead County passed the 2013 Final Budget and set this year's tax rates. Neither municipal residential nor non-residential tax rates will be increased this year, keeping the County's Residential and Farmland Tax Rate at 2.4585 and the Non-Residential Tax Rate and the Machinery and Equipment Tax Rate at 6.1654. However, the tax rate for the School Foundation did increase in order to meet provincial requisitions.

The estimated amount to be raised through general municipal taxation in 2013 is \$47,564,168, with \$3,094,421 coming from residential and farmland taxes and the majority of the remainder coming from the non-residential (\$30,200,763) and the machinery and equipment (\$14,246,183) taxes.

"Yellowhead County has been able to fulfil regular operating duties and has been able to increase our unrestricted surplus, allowing us to keep the municipal tax rate at the same level as the previous year," points out Mayor Gerald Soroka.

"Our Council has been working hard with administration in preparing this budget to make sure all levels of service can be delivered to residents while not increasing taxes," says Soroka. "This will also leave us with sufficient funds to cover all the capital projects planned for 2013 while responsibly creating a balanced budget."

The 2013 Final Budget for Yellowhead County is \$106,758,143, of which \$41,164,049 is for capital costs, \$33,838,099 is for operating expenses and \$9,711,837 is for amortization expense on tangible

capital assets.

Provincial school taxes and seniors' housing taxes are not determined by Yellowhead County. Although the taxes are collected by Yellowhead County, they are redistributed to each respective group. The taxes collected for the schools and seniors' housing account for approximately \$22 million of the County's \$106.7 million total budget.

This year's budget provides for a wide range of services to the County, including new capital projects, preventive maintenance and operating costs, while maintaining reserves for future projects and maintenance in years to come. An increase in assessments helps Council to create a balanced budget without raising taxes and allocate money for reserves for future growth. The county has three main

sources of funding for its budget: federal and provincial grants, tax levies, and service fees.

"Although the school tax is completely separate from the county tax, the noticeable increase in the school tax was something that was discussed by Council prior to the decision by Council to not increase the municipal tax," says Soroka.

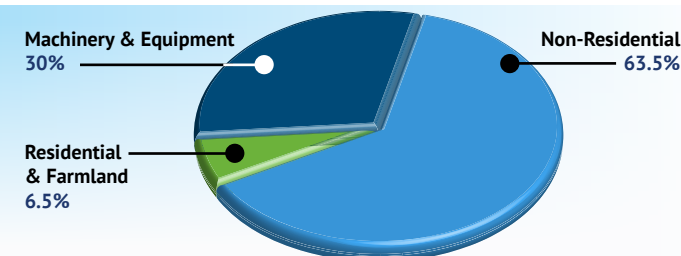
Grants and other funding resources received by Yellowhead County also contribute to covering both operational and capital costs that will be incurred this year. These additional revenue sources are factored into the County's current budget plans for this year and help insure a balanced budget with no increase to taxes while still bringing new projects and upgrades that contribute to the quality of life for county residents.

SOME OF THE 2013 COUNTY CAPITAL PROJECTS:

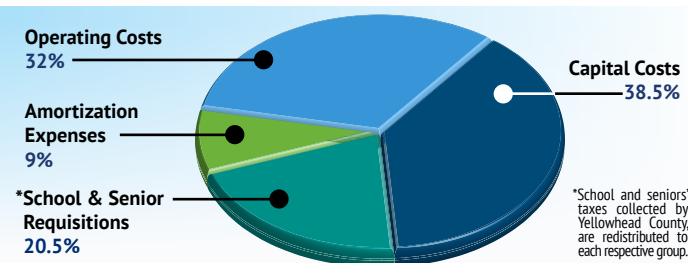
Division 1: Evansburg Arena Lighting Upgrade	\$137,000
Gazebo Trail - Tipple Park	\$10,000
Tanker (Station 10) Evansburg Fire Hall	\$300,000
Tipple Park Museum Design - project construction \$1,534,850 in 2014 (funded by debt)	\$150,000
Sani-dump Evansburg	\$55,000
Division 3: Niton Service Road Widening	\$325,000
Division 4: Peers Recreation Facility	\$4,155,080
Peers Cut-Across (Phase I) - delayed from 2012 funds transferred from 2012	\$936,000
Peers Cut-Across (Phase II) - part of the Municipal Road Network System	\$9,566,700
Future Rosevear Bridge (Technical Study)	\$400,000
Bridge File #8464 Construction	\$544,510
Division 5: Bridge File #1329 (January Creek) Construction	\$399,289
Division 6: Highway 947 (6.5 km) Grading, Base & Pave	\$10,759,000
Twp. Road 550 - Grading of Local Road	\$5,528,850
Division 7: Tanker (Station 5) Marlboro Fire Hall	\$250,000
Marlboro Water Plant Filter Replacement	\$600,000
Division 8: Robb Subdivision Land Purchase and Design	\$213,642
Robb School Demolition and Hazardous Material Removal	\$266,500
Robb Firehall - delayed from 2012	\$1,873,899
David Thompson Signage - funds transferred from 2012 budget	\$30,000

YELLOWHEAD COUNTY TAXES

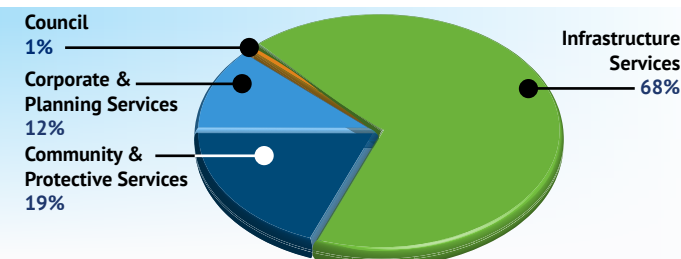
WHERE COUNTY TAXES COME FROM:



WHERE COUNTY TAXES GO:



WHICH DEPARTMENTS THOSE TAXES GO INTO:



MUNICIPAL REVENUE SHARING FINALIZED

After several meetings with Hinton and Edson over the past year Yellowhead County has developed a new formula as part of a 15 year contract that increases the amounts the two towns currently receive from the county. **The aim of the agreement is to take a proactive approach in ensuring the sustainability of the region.**

As over 85 per cent of the County's assessment base comes from non-residential assessments, it was decided that any revenue sharing formula would only be applied to the non-residential tax base around each town, and not the residential and farmland tax base.

The amount generated by this formula based agreement is then divided by the percentage of the non-residential assessment in and

around each town. Hinton will receive approximately \$1.6 million and Edson will receive \$4.1 million. This new agreement will provide approximately \$2.2 million over the current revenue sharing agreements.

In addition, there will be no service cuts as a result of this new agreement. What the agreements do stipulate is that the towns must create and have the County's accept long-range capital plans that will assist all the municipalities' long-range planning activities and capital financing options.

The revised agreement will start with the first annual payment in October 2014 and will conclude at the end of 2029. The amount that each town receives is reviewed annually and is based on the industrial assessment from the previous year.

The long-term time frame allows for financial stability and consistency to the funding model. This allows the towns to plan long-term initiatives, knowing that this revenue source is fairly stable and consistent year-to-year.

Yellowhead County also continues to cost-share with the towns of Edson and Hinton in order to share resources and avoid duplication of resources. (See 2013 cost-sharing breakdown on bottom of page.)

In 2012 the County provided the Town of Edson with approximately \$4.1 million in revenue-sharing and cost-share funding, and Hinton received approximately \$1.7 million in revenue-sharing and cost-share funding.

Yellowhead County and the two towns will continue to cooperate to provide municipal services in an efficient and cost-effective manner, ensuring long-term stability, mutual benefit and quality of life for all stakeholders.



WHAT IS THE DIFFERENCE BETWEEN COST-SHARING AND REVENUE SHARING?

Cost-Sharing – Yellowhead County has cost-sharing agreements with Hinton, Edson, and Parkland County to ensure residents are able to access services that are convenient for them. On most cost-sharing agreements Yellowhead County contributes 30% towards the total cost for operational costs and capital projects with certain exceptions such as the Edson Airport where the county contributes 50%.

Cost-Sharing
VS.
Revenue Sharing

Revenue-Sharing – For the past several years Yellowhead County has given a percentage of the taxes it collects from industry operating within the county to Hinton and Edson. These funds are meant to be used as each town sees fit and Yellowhead County has no input into how these funds are used. These revenue-sharing funds are to ensure the autonomy and longevity for each of the respective communities.

Cost-Sharing and Revenue-Sharing Transfers to Municipal Partners in 2013 Budget

The County cost-shares on the operating and capital costs for many programs and services which County residents/industry utilize. Cost sharing agreements are in place for Airport Operations, Fire Services, Recreation & Culture, Family & Community Support Services, and more. Revenue-sharing* is separate and independent of the cost-sharing programs.

EDSON

Edson Community Development*	\$2,283,426
Edson Fire	\$261,900 (\$230K operational/\$31.9K capital)
Edson Animal Pound	\$38,000
Edson Airport	\$251,500 (\$171.5K operational/\$80K capital)
Waste & Recycling	\$431,500
	(Edson Recycling operational \$130K/capital \$17.5K)
	(Landfill operational \$130K/capital \$122.5K)
	(Liability Reserve \$31.5K)
Edson FCSS	\$30,000
Edson Library	\$111,968
Edson Recreation	\$800,000 (\$700K/Operational)
	(\$100K Major Maintenance)
Galloway Museum	\$75,000
	\$4,283,294

PARKLAND

Parkland Recreation	\$51,575
	\$51,575

HINTON

Hinton Community Development*	\$1,165,612
Hinton Fire	\$307,790 (\$216K operational/\$91.7K capital)
Hinton Recycling	\$25,000
Hinton FCSS	\$20,000
Hinton Library	\$56,099
Hinton Recreation	\$400,020 (\$185K operational/\$215K capital)
	\$1,974,521

Election 2013 *October 21*

Voting stations will be open on October 21, 2013, from 10 am to 8 pm. Special Ballot voting is available for pre-election day voting.

Go To www.HEYvote2013.ca for more election information.

Identification Requirements

The Local Authorities Election Act has been amended to include a requirement for voters to produce identification. Acceptable identification is either:

- One piece of government-issued picture identification that contains the person's name and current address (such as a driver's licence), OR
- One piece of identification with name and current address that has been authorized by the Chief Electoral Office under the Local Authorities Election Act (www.bit.ly/14JvK18)

Special Ballots

Voting by Special Ballot is available soon after Nomination Day and continues until the Edson Administration Building polling station closes on Election Day. You may use a Special Ballot if you are unable to vote on Election Day because you are:

- **Physically unable to get to the voting station**
- **Absent from the municipality**
- **Working for the election**
- **A candidate, official agent or a scrutineer**

If you have any questions about running for council or voting in the next election, contact Returning Officer Tracy Parker at the Edson Administration Office or by email at tparker@yellowheadcounty.ab.ca

You are eligible to vote in the Yellowhead County Election if you:

- **Are at least 18 years old**
- **Are a Canadian citizen**
- **Have resided in Alberta in the 6 months prior to election day**
- **Your place of residence is located in the area on election day**

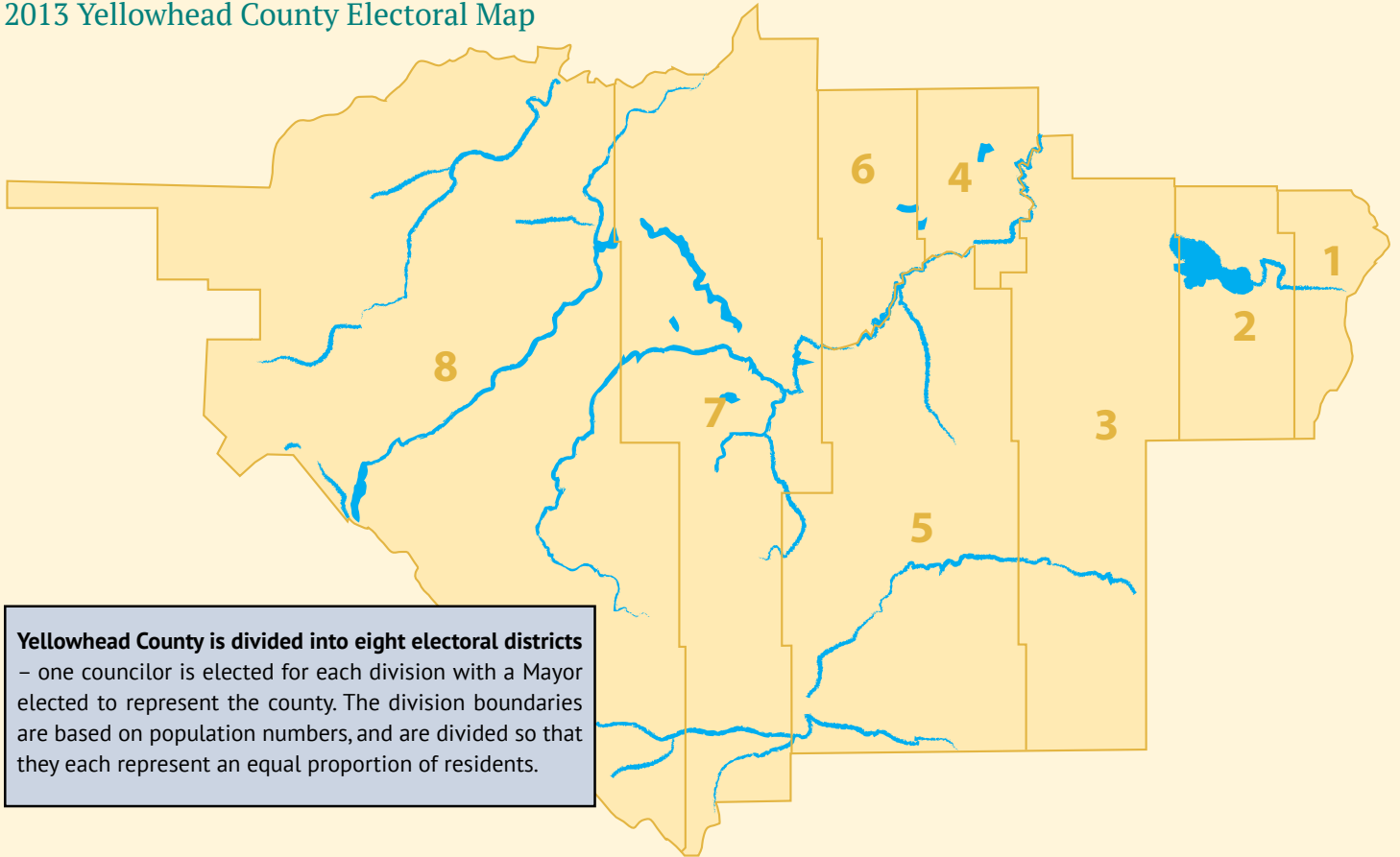
THOUGHT ABOUT RUNNING FOR COUNCIL?

GET INVOLVED - HELP BUILD A BETTER COMMUNITY!

Being a Yellowhead County Councillor gives residents an opportunity to help guide the future direction of Yellowhead County.

A municipal election gives residents a chance to not only vote, but a chance to represent their community as an elected official. Every four years municipal elections give residents the chance to represent their local community and the county as a whole on a whole range of issues. If you're looking for a new, challenging and rewarding experience consider running for County Council.

2013 Yellowhead County Electoral Map



Yellowhead County is divided into eight electoral districts
– one councillor is elected for each division with a Mayor elected to represent the county. The division boundaries are based on population numbers, and are divided so that they each represent an equal proportion of residents.

NOMINATION DAY

September 23, 2013

Nomination papers for Yellowhead County Mayor and eight (8) division councillors must be submitted in person to the Returning Officer on Nomination Day, September 23, 2013, at the Edson Administration Building between 10 a.m. and noon.

Yellowhead County has developed an information package for anyone considering running in the next election that explains these and other points in more detail. The Candidates Information Package can be picked up at the Yellowhead County Edson office or viewed online.

There are a few stipulations, defined by the Local Elections Authority Act (www.bit.ly/14jvK18) that determine whether someone is eligible to run for council.

If you have any questions about running for council or voting in the next election, contact Returning Officer Tracy Parker at the Edson Administration Office. Go to www.yellowheadcounty.ab.ca or call (780) 723-4800 or 1-800-665-6030 to find out more about running for council in Yellowhead County!

Evansburg

Yellowhead County has eight fantastic hamlets to explore, each with its own unique attributes. In our newsletters we're featuring each hamlet and showcasing all the great things to see and do there.



How to get there:

Evansburg is located 100 kms west of Edmonton just north of Highway 16 along the Pembina River Valley and is the first community at the eastern border of Yellowhead County.



Evansburg is located on the picturesque Pembina River Gorge and is part of the famous Cowboy Trail. The hamlet has a thriving small business centre and caters to the 880 residents and the surrounding community.

Evansburg began with the arrival of the Grand Trunk Pacific Railway in 1910 and the completion of the bridge across the Pembina River. Coal mining brought expansion and immigration to the village in its early years, but the mine shut down during the Depression after operating for 24 years. The Village of Evansburg became a viable community again as farming increased. In 1998 Evansburg became a hamlet when Municipal District No. 94 became Yellowhead County.

Tipple Park Museum

The museum is located in beautiful Tipple Park in the centre of Evansburg, on the same spot where the Evansburg mine was originally situated. Travelling back in time, you can walk through the site and explore the historic buildings:

- Old CN station house and tourist info centre
- Historic house holds farming and mining tools of days gone by
- Mazeppa cabin circa 1911
- The Scout Hall built in 1931
- Holly Springs school built in 1941

As of January 2013 the museum has been granted full recognized museum status from the Alberta Museum Association. Yellowhead County has committed \$2 million to renovating and upgrading it to a first-class modern museum and visitor information centre.

Farmers' Market

The Evansburg Farmers' Market opens on Main Street in May and runs until October. The market is open Saturdays from 10 a.m. to 2 p.m. Come and enjoy local products!

Pembina Valley Daze

Join the Evansburg community every August for their annual celebration. Festivities start Friday night with a car rally and barbecue at the Legion, and continue the next day with a pancake breakfast, parade, kids' zone, petting zoo, face painters, outhouse races, chili



cook-off, live entertainment and more. Enjoy the barbecues and beer gardens at the Legion. Look out for the Grouch! Evansburg is the official Home of the Grouch, elected every year during PV Daze. There is an Ecumenical Church service and High Tea on Sunday.

Lone Wolves Pembina River Run

Every year for 35 years the Lone Wolves Antique Hot Rod car club makes its way down Evansburg's main street during the Pembina Valley Daze festival. Enjoy the show and shine of over 100 cars.

Pembina River Provincial Park

Come help celebrate the park's sixtieth anniversary! Enjoy camping, kayaking, fishing and hiking at the Pembina River Provincial Park. The Park is equipped with a playground and day use area, horseshoe pitch, amphitheatre, cook shelters and fish cleaning stations. Escape for a weekend and enjoy the outdoors!

Rangeton Park

Rangeton Park is a hidden gem located just north of Evansburg on the Pembina River. Enjoy a weekend full of music ranging from country to folk to blues to rock at the Rangeton Folk Festival, Pembina River Nights and other events. Go to www.rangetonpark.ca to see this summer's concerts and events.

Other attractions:

- Enjoy a tube ride down the Pembina River from the Pembina River Tubing Co.
- Head out to the veggio U-pick farm just north of Evansburg or the Saskatoon Ridge U-pick
- Take a trail ride or move some cattle on horseback at the Riverwood Ranch (780-727-2365)
- Escape for a relaxing getaway at the Rustic Ridge Ranch & Lodge (780-727-2042)
- Enjoy the hiking trail system through both Evansburg and Entwistle
- Enjoy a game at the Pembina River Golf Club, just north of the Lobstick River

FCSS Summer Programs & Events

SUMMER BLAST 2013

Yellowhead County's Family and Community Support Services' children and youth programs run numerous summer programs. These programs are developed to foster self-esteem, build resiliency and coping skills, increase independence and enhance constructive relationships among participants, all while maintaining a high level of energy and fun. Drop-in-style programs may include a variety of games and activities that encourage participants to collectively problem-solve and cooperate to overcome challenges. Exercise and fun games are a great way to relieve stress and anxiety as well as provide a sense of calm and well-being. Below are tentative dates for the summer. Details and waivers will follow.

- July 8-12** – **Drop-in Playground** program at Niton Central School
- July 8 & 15, Aug 12 & 19** – **Parent and Tot preschool** program at Marlboro Hall
- July 9 & Aug 6** – **Parent and Tot preschool** program at Peers Community Center
- July 10** – **Playground program** at Seba Beach School
- July 11** – **Playground program** at Entwistle Playground (by the pool)
- July 15** – **Healthy Bodies, Healthy Minds** daycamp at Fulham Hall
(discover the link between healthy eating habits, exercise and positive mental health)
- July 16** – **Jr Golf Day** at Evansburg Golf Course
- July 18** – Excursion to **Hinton Recreation Center**
- July 19** – **Teddy Bear Picnic** at Bear Lake day use area
- July 22** – **Family Fun Day** at Wildwood Complex
- July 23** – **Healthy Bodies, Healthy Minds** daycamp at Robb Multiplex
- July 23** – **Beach Palooza** at Shining Bank day use area
- July 24** – Excursion to **Blue Lake Center**
- July 25** – **Horseback riding** excursion in Cadomin
- July 29** – **Amazing Race** in Evansburg
- July 30-Aug 1** – **Circus Camp**, location TBA
- Aug 7** – **Chillin' at Chip Lake** at Chip Lake Park day use area
- Aug 9** – **Pool Party** at Niton Swimming Pool
- Aug 14** – **Healthy Bodies, Healthy Minds daycamp in Wildwood**
- Aug 19** – **Emergency Services Day** at Marlboro Hall
(find out what it takes to become a member of emergency services)
- Aug 20 & 21** – **Overnight Nature Campout** at Pembina Provincial Park
- Aug 22** – **Summer Wind-Up Celebration**
(family BBQ and slo-pitch game at McLeod Valley Recreation Grounds)



For registration or for more information including times and locations please contact:

Theresa or Chrissy at 780-325-3782 or 1-800-814-3935

tdruar@yellowheadcounty.ab.ca chrissym@yellowheadcounty.ab.ca,

or look for us on Facebook under **Yellowhead County Children & Youth FCSS**.

Due to a cost sharing agreement, programs offered by Yellowhead County are open and accessible to residents of Parkland County. FCSS programming, in general, does not discriminate based on area of residence. Please note a registration fee may apply for programs. Transportation to and from programs is provided in some instances. Please register early as some programs require a minimum attendance or may be cancelled. If you have an idea for a program YOU would like to see in your area please contact us.

RIDE, PLAY AND WORK SAFE AND SMART

FOLLOWING THESE COMMON SENSE RULES CAN HELP SAVE LIVES AND PROPERTY.

AS THE WEATHER STARTS TO WARM UP, more and more people are gearing up to head into the great outdoors. With the number of recreational land users increasing each year it is more important than ever for everyone to enjoy what the local wilderness has to offer safely and responsibly.

In 2012, almost 80% of wildfires in Edson Wildfire Management Area (formerly Foot-hills Forest Protection Area) were human caused which means they all could have been prevented. Most of the human caused fires come down to two causes, abandoned campfires and residential burning of grass, brush and refuse. Off-highway vehicles (OHV) are also a problem in causing wildfires. Residents and tourists can all help prevent wildfires by ensuring their campfires are extinguished, following safe burning practices and keeping your OHV clean.

Always keep your vehicle clean and free of debris, and avoid riding through muskeg or dry, grassy areas.

When building a campfire use pre-existing pits or old campfire sites. Keep your campfire small and never leave it unattended. If old sites or rings aren't available, dig down to mineral soil and line with rocks. Keep the campfire away from flammable materials like overhanging branches, and have water nearby or on hand. Extinguish your campfire by soaking the ashes, stirring them and soak them again. If you can feel heat, your campfire is not out. Keep soaking and stirring until ashes are cool to the touch.

OHVs can spark a wildfire. Debris in hot spots like under the exhaust or around the engine can get super-heated, fall to the ground and start a wildfire. Always keep your vehicle clean and free of debris, and avoid riding through muskeg or dry, grassy areas. A small fire extinguisher and collapsible pail and shovel can be effective firefighting tools.

When burning grass, brush piles or refuse adhere to the conditions on your fire permit. Never burn in windy conditions. Avoid burning in the heat of the day. Have water and tools on hand to help put out your fire. Never leave your fire pit or burn barrel unattended while it is still burning.

Useful Links:

www.yellowheadcounty.ab.ca/departments/bylaw-enforcement (or bit.ly/12uGhYA)

www.yellowheadcounty.ab.ca/residents/safety-a-emergency-services/ohv-safety-a-regulations (or bit.ly/12VSB40)

www.facebook.com/RespectTheLand

If you are found responsible for starting a wildfire, you can be charged under the Forest and Prairie Protection Act, fined up to \$5,000 and held liable for all costs associated with fighting the wildfire.

By following these simple safety tips with an added dose of common sense, we can ensure that everyone stays safe and enjoys a wonderful summer.



HERITAGE SURVEY & INVENTORY PROCESS

'HERITAGE INVENTORY' & HISTORICAL 'PLACES OF INTEREST LIST' HELP ESTABLISH YELLOWHEAD COUNTY'S DESIGNATED HERITAGE SITES.

YELLOWHEAD COUNTY'S HERITAGE Management Project began in 2011 with a Heritage Survey that identifies sites, buildings and landscapes that hold historical significance and heritage value to the county.

In June 2012, Yellowhead County began the Heritage Inventory phase of the process. The Heritage Inventory is a three step process that involves assessing the eligibility of a resource, followed by determining its heritage significance and finally assessing its integrity.

Assessing the eligibility involves determining if the resource is old enough (pre-1960) and that it is not an excluded type (such as a site outside municipal jurisdiction, a reconstruction or a movable object). If the site is found to be eligible, the property owners are contacted to inform them of the Heritage Management Project and to arrange a site visit. During this time, background information on the resource is collected from resources such as local history books and oral histories.

In order to become a registered historic site, a resource must meet at least one of five criteria:

- A) Theme/Activity/Cultural Practice/Event
- B) Institution/Person
- C) Design/Style/Construction
- D) Information Potential
- E) Landmark/Symbolic Value

If a site is found to be significant in at least one of the above criteria, a physical inspection of the property is conducted to ensure that there are sufficient character defining elements that can convey its significance.

While a site may be historically significant, extensive renovations, modifications and the relocation of the resource might render it ineligible for heritage designation. The information for each site is summarized in two documents: The Statement of Significance and the Statement of Integrity.

The Statement of Significance provides a brief description of the historic place (including its location and physical description) along with its heritage value and a list of its character defining elements. The Statement of Integrity builds on the Statement of Significance, by as-

sessing seven aspects of integrity, primarily relating to the resource's physical form:

1. Location
2. Design
3. Environment
4. Materials
5. Workmanship
6. Feeling
7. Association

If a site is determined to be both significant and retain its integrity, it may be eligible of heritage designation at the discretion of the county. Designation is the next step in the Heritage Management Project.

As the county continues to develop its Heritage Management Program, the Heritage Advisory Board will continue to evaluate the Places of Interest List, making recommendations on which resources to inventory while continuing to have additional sites surveyed.

The Heritage Management Program is an ongoing process that will help preserve the county's unique heritage and character for generations to come.

SUMMER EVENTS in Yellowhead County

Entwistle Rodeo – June 29 & 30

Chip Lake Music Festival – July 12-13

Pembina River Nights Folk Festival – July 12&13

Chip Lake Music Festival – July 12&13

Wild Mountain Music Festival – July 19-21

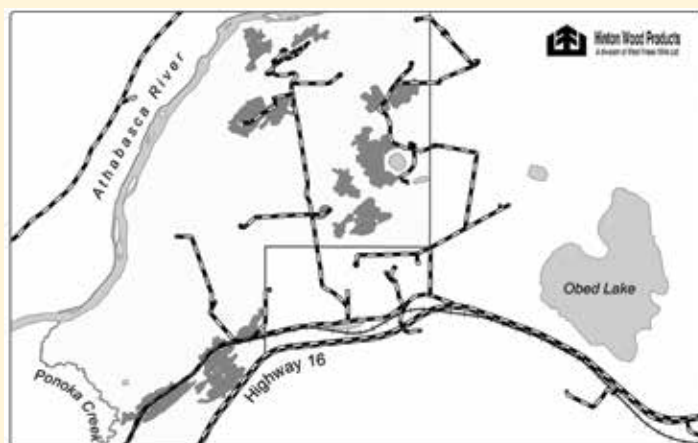
Mary Reimer Rodeo – July 26-28

Peers Gold Dust Daze – August 2-5

Evansburg Pembina Valley Daze – August 9-11

Lone Wolves Pembina River Show & Shine - August 10

Wildwood Agricultural Fair – August 16



West Fraser Mills, Edson/Hinton Woodlands are extending an opportunity for Obed residents to provide input/feedback on an upcoming McLeod 13 harvest plan. This plan will consist of operations on areas near the Hamlet of Obed. Please see the above map indicating the proposed shaded harvest areas.

Please direct any questions, concerns, or safety issues to:
Nathan Friesen
Area Planner
Edson/Hinton Woodlands
nathan.friesen@westfraser.com
1-780-865-8546

CAMPING & SANI-DUMP OPTIONS

Yellowhead County is committed to keeping its landscape beautiful and clean. For the past few years the County has been a partner in the Foot-hills Recreation Management Association, which manages several campgrounds and trails throughout the area.

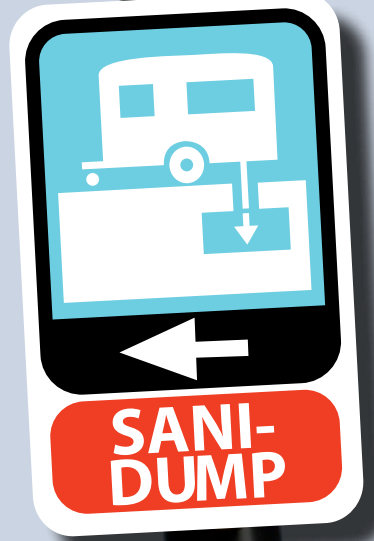
These and the County camp-grounds are meant to help

alleviate some of the stresses caused by random camping by providing low-cost campsites to residents and out-of-area visitors.

Another way that the County is working to keep its backyard in pristine condition is its contribution to the recently constructed RV sani-dump in Edson. The County has sup-

ported this initiative for many years, as it supports the County's environmental goals for dealing with sewage effluent from County campground users and random campers in the area.

Council contributed to the RV sani-dump station as part of a Municipal Cost Sharing agreement with Edson.



EVERGREENS FOUNDATION

BENEFITTING COUNTY RESIDENTS WITH SENIORS' HOUSING OPPORTUNITIES

The Evergreens Foundation manages housing on behalf of the province, municipalities and towns. The foundation provides subsidized housing to seniors, families and individuals in need.

Although no lodges are built in Yellowhead County outside of any hamlets, residents are able to access Evergreens Foundation lodges in Evansburg, Edson, Hinton, Grande Cache and, if meeting specific criteria, Jasper. Evergreens

has made progress towards keeping seniors in their home communities.

Family housing, seniors' apartments and rental subsidies are 100 per cent funded by the province; seniors' lodges are partially funded via the property tax system, in the same manner as the schools.

Although the lodges are not nursing homes, some 24-hour health-care services are now being offered in the Jasper,

Grande Cache and Edson lodges. Health care is provided directly by Alberta Health Services and is not funded by the municipality.

Parkland Lodge in Edson has seen considerable upgrades in the past few years, including new windows, roof, flooring and mechanical replacements. Emergency response systems have been upgraded at all lodges.

Please contact the Evergreens Foundation at 780-865-5444, or go to www.evergreensfoundation.com.



EARLY CHILDHOOD DEVELOPMENT COMMUNITY MAPPING PROJECT

Yellowhead County has been taking part in a provincial initiative that aims to identify and understand how the children in our communities are developing socially, emotionally, intellectually and physically.

The results were summarized into five categories: *physical health and well-being; social competence; emotional maturity; language and thinking skills; and communication skills and general knowledge.*

There were 243 questionnaires analyzed in the Hinton/Jasper area, 294 analyzed in the Edson area, and 26 for the Stony Plain/Wildwood area.

Results showed that approximately 75 per cent fall into the Developing Appropriately category. While this number seems fairly good it also means that approximately one in four children fall into the Experiencing Difficulty or Experiencing Great Difficulty categories.

Understanding early development and the factors that influence development will help Canadians at every level – from parents to educators, community members, service providers and policy-makers – to create the nurturing environment that young children need.

Communities can provide opportunities that support families, i.e. walk-friendly sidewalks, playgrounds and social programs for children and families. What's most important is to make our local communities inviting and inclusive for families and children. Stable families create happy, healthy children, thriving societies and nurturing communities.

If rich diversity can be provided to children, they will have better lifelong opportunities. This has long-term economic impact and contributes to the reduction of other social services in our communities in the future.

Additional information on the survey results can be found by contacting the Family and Community Support Services program at the Yellowhead County East Services office in Wildwood at 1-800-814-3935.



FAMILIES FIRST PROGRAM

ADVOCATES FOR FAMILIES AND RAISES COMMUNITY AWARENESS FOR FAMILY CONCERNS

Offered through the Family and Community Support Services (FCSS) office in Wildwood, the Families First program is



designed to support families with children of all ages. This is a voluntary program, providing services through home visitation, drop-in groups or workshop, intended to promote positive parent-child interactions and promote parent-child bonding.

The Families First program aims to advocate for families and raise community awareness of family concerns. The program also intends to develop and deliver workshops and support groups based on requests from the communities at large.

Services are available to families from Range Road 50 in Parkland County to Highway 751 (Mackay Road). For more information on this service, or any other offered by FCSS, please call 1-800-814-3935.

THE FAMILY OUTREACH COORDINATOR COLLABORATES WITH LOCAL FAMILIES AND SUPPORTS THEM BY:

- Referring them to community and agency resources as well as community activities and programs.
- Linking families to increase their social network and reduce isolation.
- Providing families with resource materials, information, supportive counselling and education.

FENCELINE PROGRAM

FREE OFFER The Fenceline Program is a continuation of the pilot program started in 2011. This elective program will allow Yellowhead County-owned vehicles and equipment to enter private land to apply herbicide from the fenceline to gravel. Sites will be pre-inspected to determine what equipment and herbicide selection is necessary. The landowner will be asked to sign a release allowing the County access

to the property and permission to use herbicide as agreed upon by the landowner and Yellowhead County Agricultural Services staff. This program will be completed on a first-come first-served basis and at no charge to landowners. The County has added the Fenceline Program to enhance services available to residents of Yellowhead County in addition to the existing Roadside Vegetation Management Plan.

Chip Lake Stewardship Group

The West-Central Forage Association (formerly known as West Central Conservation Group) and Yellowhead County, as partners in the Stewardship Alliance for Conservation Agriculture, are initiating a Chip Lake Stewardship Project.

The project is aimed at addressing concerns that have been brought forward regarding the environmental condition of Chip Lake, the riparian area around the lake, and its adjacent landholdings.

We are looking for input from individuals who live around or near the lake and use the area for supporting a farm operation or for recreational activities such as fishing or nature watching.

We believe that the values, beliefs, attitudes and ethical concerns of all those who live around and rely on Chip Lake are vital. If we can encourage and foster the development of a group of this nature, we can better secure a healthy ecosystem for future generations.



If you would like to become involved, contact the Wildwood Yellowhead County office at 1-800-814-3935 or 780-325-3782.



Proudly sponsored by:



Yellowhead farmers can recycle AG-FILM and TWINE this summer

IT'S FREE AND EASY!

For more information call **877 622 4460** or visit www.cleanfarms.ca

No Spray Deadline/ Agreement Reminder

Yellowhead County Ag Services requires each landowner/occupant who has signed the agreement to fulfill their No Spray obligations before the July 15 deadline.

After the July 15 deadline, Yellowhead County reassumes responsibility for weed/brush control on County roadsides. "Yellowhead County's No Spray Agreement deadline for compliance of July 15 will soon be approaching," says Sonja Pichette, Agricultural Services coordinator for Yellowhead County.

"We would like to remind all No Spray Agreement holders that they are responsible for

both weed control (noxious and prohibited noxious) and brush control in their designated No Spray Areas."

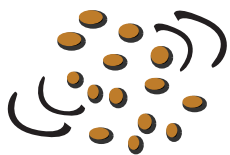
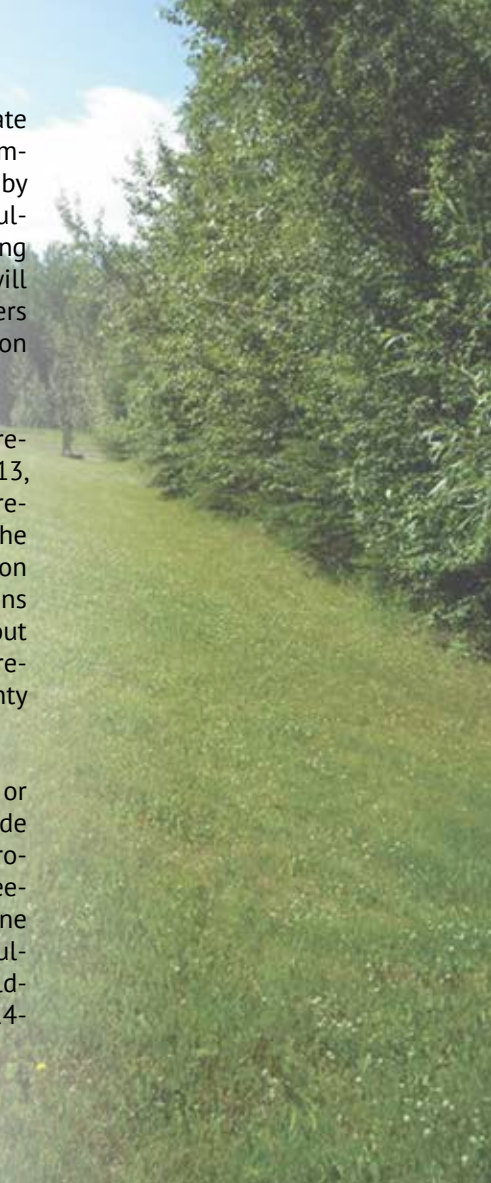
Yellowhead County spray crews will begin spraying County road right-of-ways for invasive plants as part of Yellowhead County's noxious and prohibited noxious weed program this summer. If they encounter a No Spray Area where the agreement holder has not fulfilled their responsibilities, that area will be returned to Yellowhead County's regular Roadside Vegetation Management Program as of July 16.

In the 2012 season, Yellowhead County Agriculture Services identified some areas registered as part of the No Spray Agreements that are being neglected, where weeds and brush continue to spread. This increases the eventual costs of control. Neglected No Spray Agreements will no longer be allowed

renewal unless adequate control work has been completed and re-evaluated by Yellowhead County Agriculture Services. We are hoping that this renewal process will motivate agreement holders to commit to their vegetation management.

If you have chosen not to renew an agreement for 2013, we ask that you please remove your signs prior to the start of the spray season starting May 7, 2013. Signs that remain posted without an agreement will be removed by Yellowhead County staff.

If you have any questions or concerns about the Roadside Vegetation Management Program or the No Spray Agreement program, please phone Yellowhead County Agriculture Services in the Wildwood office at 1-800-814-3935 or 780-325-3782.



SHAKE

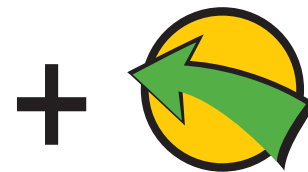
To remove debris



SEPARATE and bag it

TWINE - Bag it in clear plastic bags.
Available free of charge at the Edson Recycling Depot or Yellowhead County East Services Centre.

AG FILM - Bag it in super sacks.



RETURN

To your nearest participating transfer site:

Wildwood
Parkcourt
Peers
Edson Recycling Depot

Only clean, dry, separated and bagged twine, bale/silage wrap, greenhouse film and mulch film will be accepted.

NOT ACCEPTED: Grain bags, net wrap, feedbags, pesticide/fertilizer containers



ROADSIDE VEGETATION CONTROL

YELLOWHEAD COUNTY'S AGRICULTURAL SERVICES DEPARTMENT IS COMMITTED TO CLEANING UP THE VARIOUS SPECIES OF WEEDS AND ENCROACHING BRUSH ON ITS MUNICIPAL ROAD RIGHT-OF-WAYS AND LANDS.

Since 2010 the Yellowhead County Roadside Vegetation Control team has adopted a two-year rotation throughout the County. We treat more than 1,000 kilometres of roadsides per season with our two injection spray trucks. All spray applications are GPS-tracked so that we can monitor our progress, avoid sensitive areas and minimize misapplications.

Each year the team starts in a new area, working east to west or west to east, to target the invasive species and encroaching brush at a different time each year to maximize the program's efficacy.

If you see our team out there working, please feel free to ask questions about our program, including herbicide application, rental equipment and weed identification.

ROADSIDE VEGETATION MANAGEMENT PLAN

YELLOWHEAD COUNTY BEGAN ITS ROADSIDE VEGETATION MANAGEMENT PLAN IN 2012. THIS IS NOW THE SECOND YEAR OF A THREE-YEAR INTENSIVE ROADSIDE BRUSHING PROGRAM.

The program will lay the foundation for more effective management of county roads, resulting in better road drainage, increased public safety and reduced costs for road maintenance and roadside vegetation control.

Newly mulched areas will be sprayed the following year to limit regrowth. After the initial phases of the project, all roadsides will be mowed each year, and right-of-ways mowed every three years.

ANIMAL AND DOG OWNERSHIP IN YELLOWHEAD COUNTY: WHAT'S YOUR RESPONSIBILITY?

COUNTY RESIDENTS ARE REMINDED THAT THEIR PETS MUST BE PREVENTED FROM LEAVING THEIR PROPERTY OR LEASHED AT ALL TIMES.

No owner is allowed to let their pets roam free or become a nuisance to other landowners and passersby. The Animal Bylaw 03.06 Section 8 lays out specific regulations for owners in caring for their pets.

Yellowhead County residents are also responsible for any other domestic animal or livestock in their ownership.

Community Peace Officers regularly patrol the County,

enforcing the animal bylaw and all other Yellowhead County bylaws. Animals may be impounded for infractions and owners may face impound fees and/or fines in that circumstance.

Yellowhead County strongly urges its residents to properly care for their animals and ensure that they are not a threat to any surrounding neighbours.

If you have any questions regarding the Yellowhead County Animal Bylaw, please contact Yellowhead County Bylaw Enforcement at the Yellowhead County Administration Office at 780-723-4800 or 1-800-665-6030 or the Yellow-

head County Community Services Building in Wildwood at 780-325-3782 or 1-800-814-3935.

Dogs that have been picked up by Yellowhead County Enforcement Services under the Animal Control Bylaw are taken to the Edson Pound. To contact the Edson Pound call 780-723-6461.

Dog owners are required to prevent their dogs from:

- Running at large
- Howling excessively or disturbing the peace of others
- Causing damage to public or private property
- Biting, attacking, threatening, chasing, or injuring any person or other animal
- Biting or chasing any vehicle

The entire bylaw may be viewed at www.yellowhead-county.ab.ca.



Non-Native Hawkweeds

Orange Hawkweed & Meadow Hawkweed

Keeping An Eye On Hawkweeds

Hawkweeds are fibrous rooted perennial forbs that reproduce by seeds, stolons or rhizomes. Hawkweeds all have dandelion-like flowers that may be orange or yellow and contain milky latex “juice” found in the stems and leaves. Untreated infestations quickly form dense mats of rosettes that exclude nearly all other vegetation. Early detection is the best chance of eradication. Once established, these weeds are very difficult to control.

Manual control (digging the plant and roots out) is an option for small infestations, but repeated treatments over multiple years will be needed, as these plants are extremely hardy and reproduce easily from root fragments.

There are several registered herbicide options available for hawkweed species. Continued monitoring is recommended after chemical/mechanical applications to determine how effective control has been.



For more detailed information on non-native hawkweeds please contact Yellowhead County's Agricultural Services department. The County offers a brochure with information on how to identify these invasive plants and suggestions for alternatives to grow in your garden. The full brochure can also be found on the County website.

**Always use herbicides according to the label directions. Contact your local County Agricultural department if you have any questions about herbicide use.*

How Did These Plants Get Here?

Although tracing the origins of invasive plants is difficult, infestations can begin from something as simple as seeds in mud stuck on your shoes, off-highway vehicle or heavy machinery. As infrastructure improves it becomes much easier for existing and new invasive species to travel long distances.

Any type of ground disturbance activity can create an excellent opportunity for invasive species to establish. You may be unaware that you are transporting “alien fugitives” to new areas. It's difficult for invasive species to invade



healthy plant communities, so let's help keep the existing communities healthy! Please practice cleaning your vehicles, apparel and items before entering new areas to help prevent the spread of prohibited noxious and noxious species.

Infestations can also start from plants that escape gardens. There is no question that hawkweed flowers are bright and beautiful, but it is illegal to grow them as per the Weed Control Act of Alberta.

AG RENTAL EQUIPMENT

The Agricultural Services Board strives to promote improved agricultural practices within the County. The rental program is one method used to achieve this goal.

The program objective is to rent equipment on a cost-recovery basis that is:

- **Not available from local private rental agents**
- **Not in constant use by ratepayers**
- **A specialized piece of equipment**
- **Related to a program sponsored by the board**

The program also maintains spray equipment that can be utilized by landowners complying with the weed control policy.

Equipment can be rented from:

- **Ditner's Feed Service & Supply Ltd.: 780-325-3828**
- **Country Farm and Feed: 780-693-0121**
- **Har-De Agri Services Inc: 780-727-2806**

A complete list of all the equipment can be found on the County's website.

WEED INSPECTION PROGRAM

Yellowhead County's weed inspection team continues to try to increase public awareness of invasive plants through information sessions, personal contacts with landowners, information letters and presentations.

If you are interested in obtaining information or involved in any type of group where weeds or their control might be of interest, please call Yellowhead County's Agricultural Services at the Yellowhead County Community Services Building in Wildwood at 780-325-3782 or 1-800-814-3935 or go to the County website for more detailed information.

We would love to meet with you, and we can give you recommendations for effective control, help you develop a management plan or provide you with rental equipment for plant control.



Yellowhead County Photo Contest

Three categories to enter:

People - Photos that show people enjoying the events, family activities, and recreation in Yellowhead County.

Places - Show the beauty of Yellowhead County from the Pembina River to the Coal Branch. Show us all the great spots out there!

Production and Progress - Highlight all the agriculture, industry, and business activity in Yellowhead County.

Entry forms and contest rules are available on the Yellowhead County website www.yellowheadcounty.ab.ca or at either County offices.

Contest Deadline: **September 30, 2013**

DID YOU KNOW?

Every ratepayer residing in Yellowhead County should receive a weekly copy of the Edson Leader's *Towne & Country* newspaper.

Within these pages is information about County workshops, information on planning and development, news, and more.

If you have requested to not get ADMAIL from Canada Post or have a no-flyers sticker on your mailbox **you will still receive** the *Towne & Country* as community newspapers are not considered ADMAIL.

If your mailing address is located outside of the County, such as a PO Box or street address within Edson or Hinton you may have the option to cancel your delivery of the newspaper if requested.

Please contact us at Yellowhead County's Administration Office for further details.

County's Country Living Open House June 11, 2013 - Wildwood

Agricultural Services

Fire District

Bylaw Enforcement

Heritage Survey

Family & Community Support Services

Parks and Recreation

Feel free to contact Yellowhead County's Chief Administrative Officer or Directors with questions, concerns or comments.

Jack Ramme

- Chief Administrative Officer

Barb Lyons

- Director of Corporate and Planning Services

Don O'Quinn

- Director of Infrastructure Services

Debbie Charest

- Director of Community and Protective Services

Yellowhead County

780-723-4800

1-800-665-6030

Fax: 780-723-5066

Edson Office (Main)

2716 - 1st Avenue

Edson, AB T7E 1N9

Wildwood Office

53404 Rge Rd 92A

Wildwood, AB

Hours of Operation

Monday to Friday

8:00 a.m. to 4:30 p.m.

Office Locations

After Hours Utilities Emergency Number: 780-723-3221

Visit the Yellowhead County website – it's a quick and effective way to get the information you need on municipal programs and services.

Visit www.yellowheadcounty.ab.ca

