

New ATV's for Peace Officers

Suzuki Canada and Mountainside Sales and Rentals have teamed up to donate two off-highway vehicles to Yellowhead County Peace Officer Enforcement.

The two Suzuki King Quad 750s 4x4 will enable the officers to reach many areas in the county more easily. It will also put them on the same level as other off-highway vehicle users and make the officers more relatable. Officers will

be focused on safety and education for OHV users, giving the officers another tool to interact with residents and visitors to the county.

The Peace Officers will also be using the quads to partner with the RCMP, Parks Canada, and Fish and Wildlife in order to provide better enforcement for all of these agencies. The quads will also be available for emergency use in search and rescue and fire services.

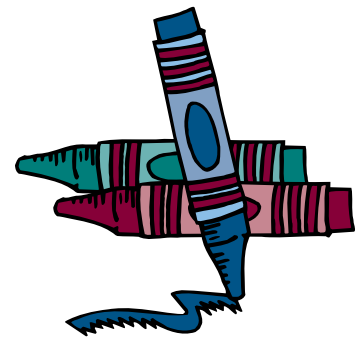
The \$10,700 quads were donated through a Canada-wide program initiated by Suzuki Canada. Mountainside Sales and Rentals then provided \$3,000 worth of accessories that will facilitate the use of the quads specifically for the enforcement officers.

Anyone with questions regarding off-highway vehicle use in the county are encouraged to contact Supervising Peace Officer Glenn Alford at 780-723-4800.



FALL 2008

A BI-ANNUAL NEWSLETTER
PUBLISHED FOR THE RESIDENTS OF
YELLOWHEAD COUNTY



Colouring Contest

Yellowhead County ran a colouring contest to celebrate Alberta Recreation and Parks month in June, outlining a few fun outdoor activities that everyone can do. Congratulations to the winners and thanks to all who entered!

Colouring Contest Winners

- ✓ Tyra Meropoulos
- ✓ Mataya Petty
- ✓ Trina Antonio
- ✓ Atina Luymes
- ✓ Rudy Clark
- ✓ Koden Ulmer
- ✓ Braden MacEachern

A look inside

<i>Emergency calls from your cell phone</i>	4
<i>ASB Program Update</i>	8
<i>Turn off your ignition</i>	
<i>Turn on the savings</i>	11

Dust Control Subsidy to be tied to cost of service

Yellowhead County Council has voted to update the Dust Control Policy for the 2009 season.

According to the policy, the cost of subsidized dust control will be tied to the average actual cost paid by the county.

In 2008 the average cost per 200m was \$500, and therefore the cost of a 2009 fall and spring subsidized application will be \$250 each. This subsidized rate will be available to one applicant per occupied dwelling.

Yellowhead County provides dust control measures in an ongoing effort to ensure public safety, quality of life and to realize road maintenance cost reductions.

Council is committed to maintaining an affordable quality of life for all residents; however they also have to deal with rising cost of materials and contractors. By tying the subsidized cost to the actual cost, the county will still be able to offer a generous subsidy while still maintaining an equitable balance.

Dust control measures will still be in place within the hamlets of the county, as well as other areas such as intersections where safety is an issue.

Residents who would like to sign up for dust control must register by April 15 for spring application and July 31 for fall application, please watch the Yellowhead County ad pages in the Edson Leader Town and Country for details in the spring.

Taxation Penalty December 31, 2008

On May 16, 2008 the 2008 Combined Assessment & Taxation Notices were mailed. The due date for payment was June 30, 2008, and any 2008 levy remaining unpaid was subject to a 6% penalty.

For accounts that remain outstanding, a 6% penalty will be calculated on the outstanding balance as of December 31, 2008. Accounts remaining in arrears will be recovered through the Tax Recovery

process as defined in the Municipal Government Act Part 10, Divisions 8 through 9.

Remittance should be made payable to Yellowhead County and can be made by legal tender at a County office, at any Bank, Internet Banking and Telephone Banking. If mailing payment, the postmark will determine date of payment.

Yellowhead County offers a tax installment plan that

begins in December of each year. This plan allows for the payment of current taxes in equal installments over a twelve month period without penalty, provided that no installments are missed. However, all tax arrears must be paid prior to initiating the plan.

If you have any questions, please contact the Edson office at 780-723-4800 or 1-800-665-6030.

The Importance of Playing

Yellowhead County Family and Community Support Services (FCSS) recognizes the importance of playschool programs, and Council strives to support the continued vitality of these programs.

"There's increasing evidence that children gain a lot from going to preschool," says Kathleen McCartney, PhD, Dean of Harvard Graduate School of Education. Children who attend a quality preschool enter kindergarten with better pre-reading skills, richer vocabularies, and stronger basic math skills than those who do not.

The most important skill that children learn at preschool is how to socialize – get along with other children, share, contribute to circle time, compromise, be respectful of others, and problem-solve. Playschool provides a place where a child can build the foundation for future success and good citizenship.

The level of FCSS involvement varies from playschool to playschool, and often from year to year, depending upon

the wishes of the parent board. FCSS can provide operational grants, assist in searching for other funding sources, help with advertising, provide information on board roles and responsibilities, arrange workshops on child development, advise on staffing and safety regulations, and locate relevant information as requested.

Within Yellowhead County, FCSS works with Marlboro Playschool (in Marlboro Community Hall), Peers Playschool (in the Peers Ag. Building), Carrot Creek Playschool (in Niton Central School), and Lobstick Playschool (in Wildwood School). Through a cost sharing agreement with Parkland County, we are also involved with Entwistle Playschool and Seba Beach Playschool.

Hours of operation and contacts, for programs in the rural areas are as follows. Please call the contact number for more details, such as criteria for enrollment, and registration fees.



Marlboro - Tuesdays and Thursdays 1:00 to 3:00 p.m.
Lindy Bonn 1-800-814-3935

Peers - Tuesdays and Thursdays 9:30 to 11:30 a.m.
Jeri Peterson 780 693-0115

Carrot Creek - Mondays and Wednesdays 10:00 a.m. to 1:00 p.m.
Brandy Benson 780 795-2421

Lobstick - Tuesdays and Thursdays 10:00 a.m. to 1:00 p.m.
Nancy Charlton 780 325-3783

Entwistle - Mondays and Wednesdays 9:30 to 11:30 a.m. or 12:30 to 2:30 p.m.

Danielle Peckwood 780 727-4248

Seba Beach - Tuesdays and Thursdays 9:00 to 11:45 a.m.
Susan Davis 780 892-4647

Programs in Edson and Hinton operate several days each week and may offer choices of once or twice a week attendance and morning or afternoon classes. The following contacts will be happy to provide more information on their individual programs.

Edson Parent Link Nursery School - Contact 780 723-6444

Edson Playschool Association - Contact 780 723-5766

Growing Adventures (Hinton) - Alma O'Rourke 780 865-2364

Children's Creative Playschool (Hinton) Connie Underwood 780 865-1860

Children's Indoor Playground Society (Hinton)

Alana Kooznetsoff 780 817-4239

Hinton Head Start Vicky Arlidge 780 865-5189

Most playschools will take new students at any time during the year, if they have space available. If you missed the registration day you can still call the playschool of your choice to inquire about enrolling your child in a program.

2007 Planning and Development Statistics

Development Permits	334 Total	Subdivision Applications	108
55 Commercial	5,111,200	Land Use Bylaw Amendments	15
27 Industrial	26,954,800	Compliance Letters	98
234 Residential	23,166,802	Public Land Dispositions Referrals	46
		Road Closures	4
		Subdivision and Development	
		Appeal Board Hearings	5

(18 - in progress, cancelled, withdrawn or refused)



Emergency calls from your cell phone

Yellowhead Regional 911 call center receives 60 per cent of its call volume from wireless callers. Unlike landline calls from homes and businesses, which include the name, phone number and address, wireless calls do not include exact location information and are often made by people who are unsure of their location. Wireless calls also present the problem of being “dropped” - meaning that the caller may be in an area with poor cell service and the call is lost.

In an emergency situation it can be hard for a caller to focus on answering the questions of a 911 dispatcher, but the most critical information that a caller can give a dispatcher is their location. If the dispatcher does not know where to send the emergency units then help will be delayed. The tips listed on this page are meant to assist, should you encounter an emergency situation that requires you to use a wireless communication system.

The more information you can give to the 911 dispatcher the better able they will be equipped to determine your exact location and direct emergency units to the scene for a timely response.

- Memorize your rural address. Knowing this information can speed emergency response.
- When encountering an emergency situation on a rural road or highway, STOP
- Continuing to travel past the incident will only make location information harder to determine.
- Try to remember your travel time from the latest recognizable center you passed through (a Hamlet, Highway intersection, etc.)



While you are travelling try to pay attention to your location before an emergency happens

- Know your direction of travel
- Know your location in relation to nearest center
- Watch for landmarks
- Watch for point of interest signage
- Watch for traffic signs indicating kilometers to next center
- Look around for details at incident site. i.e. rural address sign, landmarks or any other visible indicators.
- Look for nearest range road or town ship road sign

Grant program to support recreation in the county

Yellowhead County has, over the past two years, been working to improve the way that support is provided to community groups providing programs and facilities for the benefit of residents. A County-wide Recreation Board was formed in November 2007 and that board has been very involved in the development of a new set of grants that will provide funding support to community groups. Yellowhead County Council approved the Recreation Grants Policy on April 22, 2008 allowing the implementation of the following Recreation Grants.

RECREATION INITIATIVES FUND - available to promote new initiatives in recreation facilities, services and program delivery. While this fund will be offered annually, it is a “one-time only” grant for each project submitted.

RECREATION PROGRAM/EVENT GRANT - provides funding for community non-profit groups that are providing cultural, fitness, sport and other recreational programs and events to residents of Yellowhead County.

COMMUNITY HALL/OUTDOOR AMENITY OPERATIONAL GRANT - available to community organizations in Yellowhead County who are operating a rural community hall or outdoor amenity and who are not funded operationally by another level of government.

COMMUNITY HALL/OUTDOOR AMENITY CAPITAL ASSISTANCE GRANT - available to community organizations that operate a community hall or outdoor amenity to assist with funding capital projects.

All community groups are encouraged to contact Yellowhead County for assistance in completing the grant application. Applications can be picked up at both the Edson and Wildwood offices or online at www.yellowheadcounty.ab.ca. Deadlines for grant submission are highlighted on the application, however, since this is the first year of this new funding allocation system, community groups should continue to submit applications even if the deadline has passed. Funding is still available and those funds will be released this fiscal year if applications are submitted before the end of 2008.

Increasing burden on Volunteer Firefighters

Yellowhead County safety is dependant on volunteers to support our eight fire stations throughout the county. The county has continuously depended on these volunteers in many emergency situations

According the Yellowhead County Master Fire Plan the retention of these volunteers has become a substantial concern. Yellowhead County is currently in a better position that most other areas that depend on volunteers; however this may change in the future.

New legislation continues to make it more and more difficult for volunteers to donate their time to helping fight fires and lend a hand in emergencies. Volunteers continue to need more extensive training both to protect themselves and others, include training with hazardous materials and more medically-focused emergencies.

Volunteers are also finding it more difficult to donate their time. This is due to many factors, including working away from their community, a busier lifestyle, and other commitments. There is also an aging population in volunteer firefighters, and while this bodes well for continued commitment, it also means that newer firefighters will inevitably have to be recruited.

Currently morale is quite high within the ranks of volunteers, and the county fire administration has been hard at work to ease the burden on smaller stations and on the volunteers. Yellowhead County is committed to maintaining the safety and security of all residents and continues to work on new solutions to ease the burdens on the current and future volunteers.

Yellowhead County Photo Contest *Residents show off their talent*

To celebrate Recreation and Parks Month Yellowhead County hosted a photo contest highlighting all the great things to see and do throughout the county.

Entries were sent in from all over the county, showcasing cross-country skiing, quadding, gorgeous mountain vistas, and beautiful fall colours.

A big thanks to all who entered and a reminder to keep those eyes peeled and camera's ready for next year's contest!



County Pride Showcase Tour

The 2008 County Pride Tour provided a hands-on look at some outstanding examples of the beautiful landscaping that can be done with the plants that flourish in this climate.

On July 30, 2008, a bus full of green thumbs toured Yellowhead County stopping to see the nominated and winning farms, acreages and hamlet yards in the county. This year's contest received even more nominations than previous ones, and revealed more hidden gems that are really wonderful to see. In the judging process places were marked for over-all presentation, including neatness and use of space.

This is followed by a closer look at the following categories:

- Lawn care
- Flowerbeds/ gardens - including vegetable
- Species variety & health
- Buildings
- Management practices

Although our local climate presents some big challenges for gardeners, it is inspiring to see the clever and creative ways that gardens have been adapted to flourish here. In addition to having an opportunity to view so many beautiful spots, tour participants, whether they were gardeners or not, enjoyed talking to gardeners and learning more about plants and plant care.

Winners of the 2008 County Pride Contest:

Hamlet Category

1. Marian Madden
2. Pat Di Marcello

Acreage Category

1. Debbie & David Janzen
2. John Horvath

Farm Category

1. George & Joan Young
2. Nick & Vernice Myschuck

Honorable Mention:

- Zenobia Mocarski



Debbie & David Janzen



George & Joan Young



John Horvath



Marian Madden

Thanks to everyone who participated and the whole county looks forward to seeing what hidden treasures are found next year! Remember, anyone can nominate any property within the county that they feel deserves recognition even if it's their own.



Debbie & David Janzen

A.S.B Program Update

Roadside Vegetation Control Program

This year the team started roadside vegetation control in the Peers/Shiningbank area. The trucks then split with one moving west and finishing in Hinton and the other finishing south of Evansburg. In 2009 we will begin north of Evansburg and Wildwood and continue west until the end of the season. To date we have sprayed a total of 964.5 km of road side vegetation.

Weed Inspection Program

This year the weed inspection program started west of highway 32 and continued eastward throughout the 2008 season. Within each of these townships, all lands accessible by road were inspected. This summer, approximately 2,650 weed inspections were completed. Inspections were also done in the Hinton area and surrounding subdivisions and area including: Old Entrance, Mountainview Estates, Brule, Seabolt, East River Road, Aspen Heights, Obed, Grandview Estates, Maskuta Estates, Pedley and Carldale.

A total of approximately 350,000 acres were covered. By the end of the 2008 season the last three seasons worth of data (2006, 2007 and 2008) will be installed on the AIMS program. In 2009 weed inspection reports will display this information to landowners when compliance letters are sent.

For more information about Yellowhead County's Roadside Vegetation and Weed Inspection Program please contact the Agriculture Services Department in Wildwood at 1-800-814-3935.

Check out these upcoming events!

- **Landowner's Rights – When the oil and gas industry comes knocking**
- **Lease Agreements Between Landowners**
- **Clubroot of Canola Awareness**

For dates and locations of these extension events please call the Agricultural Services Department in Wildwood 1 800-814-3935 or watch the Yellowhead County ad pages in the Edson Leader Town and Country

PFRA Shelterbelt Tree Program

The Prairie Farm Rehabilitation Administration's (PFRA) Shelterbelt Centre in Indian Head, Saskatchewan produces trees and shrubs that are provided at no cost for agroforestry plantings on agricultural land in Alberta, Saskatchewan, Manitoba and in the Peace River region of British Columbia.

The seedlings provided are an incentive to producers adopting beneficial management practices and environmental stewardship. The aim of the Prairie Shelterbelt Program is to improve the performance and sustainability of the agricultural sector by helping to achieve the social, economic and environmental benefits of agroforestry.

Eligible applicants are responsible for seedling transportation costs, planting, and maintenance. Seedlings range from 1-4 years old and are distributed as either bare-root, containerized or cuttings depending on species and availability.

Eligibility

- Rural land owners of 5 acres (2 ha) or more throughout Manitoba, Saskatchewan, Alberta and the Peace River Region of British Columbia;
- Managers of federal, provincial or municipal lands for establishment of shelterbelts, buffers or research trials;
- First Nations councils and individuals for planting on reserve land
- Community service organizations can access seedlings for planting projects on eligible land with a signed application from the land owner.

Species Available

Deciduous trees

Green Ash	Peachleaf Willow
Bur Oak	Acute Willow
Cottonwood	Hybrid Poplar
Silverleaf Willow	Manitoba Maple
Trembling Aspen	

Deciduous shrubs

Caragana	Hedge Rose
Silber Buffalo Berry	Villosa Lilac
Sea Buckthorn	Snowberry
Red-Osier Dogwood	Hawthorn
Pincherry	Choke Cherry
Red Elder	Siberian Crab

Coniferous trees

White Spruce	Colorado Spruce
Scots Pine	Siberian Larch

How to Apply

Applications are available at agricultural resource offices, county offices, AFC-PFRA offices, an online at: www.arg.gc.ca/pfra/shelterbelt_e.htm

Applications are accepted from June 1 to March 15 of the following year and tree distribution runs from late April to mid May of each year.

For more information and applications for this program please contact the Agriculture Services Department in Wildwood.

Clubroot of Canola

During the weeks of August 11th-15th and 18th-23rd Yellowhead County's Agricultural Services Department inspected the municipality for Clubroot of Canola. In all, 90 fields were inspected and unfortunately there was one confirmed case of Clubroot just north of Evansburg.

As many of you know, Clubroot of Canola is a disease that is spreading rapidly through fields in Alberta via soil born spores. Once present and if appropriate crop rotations are not utilized, it diminishes Brassica species yields significantly. This is the primary reason for Clubroot of Canola being added to the Agricultural Pest Act of Alberta. Under this Act, the Agricultural Fieldman for the municipality is the inspector and is required to bring awareness to the issue, inspect and enforce the Act on infected properties.

In the one confirmed case, the landowner was contacted immediately and met with on site. They were very receptive to any information that we could provide them regard-

ing this disease and how to manage the problem now that it was confirmed. This is the attitude we need to have because this disease will not go away and will drastically effect Canola production if it is not managed.

Yellowhead County's Agricultural Service Board is currently reviewing a draft policy that will affect canola production on lands where Clubroot has been confirmed. Yellowhead County plans to develop a sound policy that will prevent the infestation of Clubroot in Yellowhead County.



Yellowhead Weed Collaboration

On July 22, 2008 Yellowhead County's Agricultural Services department and Alberta Sustainable Resource Development (SRD) held a multi-stakeholder meeting to discuss weed collaboration within this municipality.

All stakeholders including Yellowhead County landowners, SRD, CN Rail, Forestry Companies,

Alberta Infrastructure and Transportation, Jasper National Park, Aboriginal groups, vegetation management contractors and operators in the oil and gas industry who have an interest in weed or invasive plant management were invited to this meeting.

Stakeholders were invited to showcase other initiatives

Residents in Yellowhead County need to be aware of this disease whether or not they are an agricultural producer. The following proactive control measures may be used:

1. Eliminate the introduction.
 - For example: If you buy equipment that is used to disturb the soil from any area of the province, please thoroughly wash it off prior to using it on your property.
2. Know what is happening on your property and restrict access if necessary.
 - For example: The equipment that contractors use to disturb the soil should be cleaned prior to entry.
3. Specific to producers:
 - Use long rotations between Canola crops. Using a 4 year rotation or more does not prevent the introduction of the disease but it will restrict its development within the field.
 - Avoid the use of straw, hay, green feed, silage and manure from infected or suspicious areas. Clubroot will survive through the digestive system of animals.
 - Scout your fields regularly and carefully. Identify causes of wilting, stunting, yellowing and premature ripening.
 - Avoid seeding common untreated seed. Practice good sanitation especially on equipment coming from unknown areas.

and discuss the keys to their success, as an opportunity to share technical advice between stakeholders and establish potential partners.

At the next meeting we will be establishing a steering committee and decide what the next steps will be. It will be held on October 29, 2008 in the Edson area.

We have developed great enthusiasm toward weed control and we feel we are one step closer in establishing the partners to combat the weed problem in Yellowhead County. If you want more information about attending future weed collaboration meeting please contact the Agriculture Services Department in Wildwood.

Are you prepared for an emergency?

In a major emergency, you need to be prepared. You need to be ready to take care of yourself and your family for at least 72 hours while emergency workers help those in urgent need. Start today by getting an emergency kit. You can prepare your own or purchase one either online or from many stores across Canada.

What goes into a basic emergency kit:

- Water - two litres of water per person per day (include small bottles that can be carried easily in case of an evacuation order)
- Food - that won't spoil, such as canned food, energy bars and dried foods (remember to replace the food and water once a year)
- Manual can opener
- Flashlight and batteries
- Battery-powered or wind-up radio (and extra batteries)
- First aid kit
- Special needs items - prescription medications, infant formula or equipment for people with disabilities
- Extra keys - for your car and house
- Cash - include smaller bills, such as \$10 bills (travellers cheques are also useful) and change for payphones
- Emergency plan - include a copy in your kit, and photocopies of personal documents, such as passport and birth certificate.

Plus, consider these additional emergency supplies for your kit

- Change of clothing and footwear - for each household member
- Sleeping bag or warm blanket - for each household member

- A whistle - in case you need to attract attention
- Garbage bags - for personal sanitation
- Toilet paper
- Safety gloves
- Basic tools - hammer, pliers, wrench, screwdrivers, fasteners, work gloves
- Small fuel-driven stove and fuel - follow manufacturer's directions and store properly
- Two additional litres of water per person per day - for cooking and cleaning
- Other personal care supplies

Emergency car kit

If you have a car, prepare an emergency car kit and keep it in the vehicle. The basic emergency kit for cars should include the following items:

- Food - that won't spoil, such as energy bars
- Water - in plastic bottles so they won't break if frozen (change every six months)
- Blanket
- Extra clothing and shoes
- First aid kit - with seatbelt cutter
- Small shovel, scraper and snowbrush
- Candle in a deep can and matches
- Wind-up flashlight

Also keep these inside your trunk:

- Sand, salt or cat litter (non clumping)
- Antifreeze/windshield washer fluid
- Tow rope
- Jumper cables
- Fire extinguisher
- Warning light or road flares

All of this information was provided by the Government of Canada. Visit www.GetPrepared.ca to learn more.

Edson & District e-waste and toxic round up

Each spring and fall the Edson and District Recycling Centre organizes the E-waste and Toxic Round-up. This day gives residents a chance to clean their house of hazardous wastes. Check the kitchen, bathroom, laundry room, basement, utility/workshop, garden shed and garage. Most people don't consciously generate hazardous waste, but it can build up unintentionally through everyday use of common items. Many of these wastes are potentially damaging to our environment and to our health and safety. Every resident has a responsibility to ensure that these wastes are managed safely and effectively.

Examples of what can be brought to the E-waste and Toxic Round Up include:

- Computers & all accessories
- TV's & electronics
- Fluorescent light bulbs
- Batteries
- Paint
- Aerosols
- Household Cleaners
- Pesticides
- Hairspray Cans
- Oven cleaners
- Any container with a warning label or symbol on the container itself.

The dates of the round-up will be advertised in the local papers as well as the Town of Edson and Yellowhead County websites. For more information please contact the Edson and District Recycling Depot at 780-723-4002.



Turn off Your Ignition Turn on the savings

Did you know that idling does not help warm up your car, in addition to wasting money that you may not want to spend on fuel?

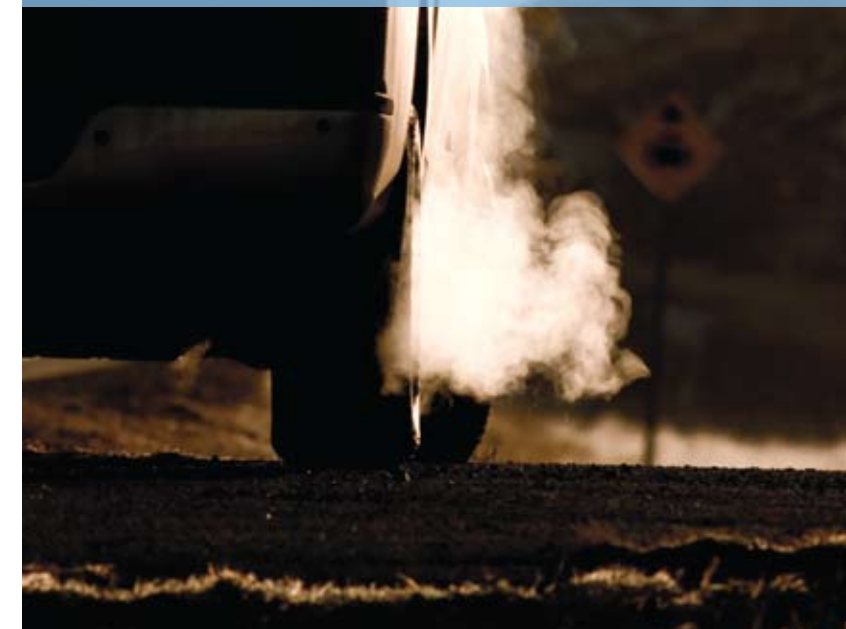
1. Idling gets you nowhere - and it can be costly. Excessive idling wastes a significant amount of fuel and money and generates needless greenhouse gas (GHG) emissions. If drivers of light-duty vehicles avoided idling by just three minutes a day, over the year Canadians would collectively save 630 million litres of fuel and 1.4 million tonnes of carbon dioxide (CO2) emissions, and \$630 million in fuel costs (assuming a fuel cost of \$1.00/L).
2. Warming up the vehicle means more than warming the engine. The tires, transmission, wheel bearings and other moving parts also need to be warmed up for the vehicle to perform well. Most of these parts don't begin to warm up until you drive the vehicle.
3. Any more than ten seconds of idling uses more fuel than is required to restart the engine. However, the break-even time to offset any potential incremental maintenance costs to the starter or battery is under 60 seconds. So, as a guideline, if you're stopped for more than 60 seconds - except in traffic - turn off the engine.
4. For the average vehicle with a 3-litre engine, every 10 minutes of idling costs over one quarter of a litre (over 1 cup) in wasted fuel. Keep in mind that every litre of gasoline you use produces about 2.3 kilograms of carbon dioxide.
5. If you're going to be stopped for more than 60 seconds - except in traffic - turn the engine off. Unnecessary idling wastes money and fuel, and produces greenhouse gases that contribute to climate change.
6. Contrary to popular belief, excessive idling is not an effective way to warm up your vehicle, even in cold weather. The best way to warm it up is to drive it. In fact, with today's computer-controlled engines, even on cold winter days, no more than two to three minutes of idling is usually enough warm-up time before starting to drive. This also reduces fuel consumption and GHG emissions.
7. You can help reduce the impact of cold starts - and reduce idling times - by using a block heater on cold winter days. This device warms the coolant, which in turn warms the engine block and lubricants. The engine will start more easily and reach its proper operating temperature faster.
8. You don't need to leave a block heater plugged in overnight to warm the engine - two hours is more than enough. In fact, you can use an automatic timer to switch on the block heater two hours before you leave. At -20°C, block heaters can improve overall fuel economy by as much as 10 percent. For a single short trip at -25°C your fuel savings could be in the order of 25 percent.

9. A poorly-tuned engine uses up to 15 percent more energy when idling than a well-tuned engine. Keeping your vehicle properly maintained according to the manufacturer's suggested maintenance schedule is a key to fuel efficiency and reduced GHG emissions.
10. Calculations drawn from a 1998 survey on driving habits suggests that in the peak of winter, Canadians voluntarily idle their vehicles for a combined total of more than 75 million minutes a day - equal to one vehicle idling for 144 years. We idle about 40 percent less in summer, but Canadian motorists still waste a significant amount of fuel and emit unnecessary greenhouse gas emissions.
11. Warming up a vehicle in the winter and cooling it down in the summer are the most common reasons given for idling! Surveys show that Canadians also idle while waiting for passengers, stopping at railroad crossings, waiting to park, running quick errands, sitting in drive-through lanes and when stopping to talk to an acquaintance or friend.

Change your habits

- Turn off the engine if the vehicle is going to be parked for more than 60 seconds (except in traffic).
- Drive the vehicle to warm it up, rather than idling the engine. (On cold winter days, usually no more than two to three minutes of idling is enough warm-up time.)
- Use remote car starters wisely to avoid excessively long warm-ups.
- Use a block heater on cold winter days to warm the engine before starting it (ideally, the block heater should be turned on by an automatic timer 2 hours before starting).
- Remember, the best way to warm up a vehicle is to drive it at a moderate speed.

This information was provided by the Government of Canada. To learn more visit www.oee.nrcan.gc.ca/transportation/idling



Yellowhead County kids learn about the importance of water safety during the Family BBQ hosted at the McLeod Valley Grounds this summer.



Feel free to contact Yellowhead County's Chief Administrative Officer or Directors with questions, concerns or comments.

Jack Ramme

– Chief Administrative Officer

Barb Lyons

– Director of Corporate Services

Don O'Quinn

– Director of Infrastructure Services

Debbie Charest

– Director of Community Services

Yellowhead County

780-723-4800

1-800-665-6030

Fax: 780-723-5066

Hours of Operation

Monday to Friday

8:00 a.m. to 4:30 p.m.

Office Locations

Edson Office (Main)

2716-1st Avenue
Edson, AB T7E 1N9

Wildwood Office

5215-50 Street

Visit the Yellowhead County Website. It is a quick and effective way to get the information you need about our programs and services.

Visit www.yellowheadcounty.ab.ca



RETURN UNDELIVERABLE
CANADIAN ADDRESSES TO
YELLOWHEAD COUNTY,
2716 -1st Avenue,
Edson, AB T7E 1N9

