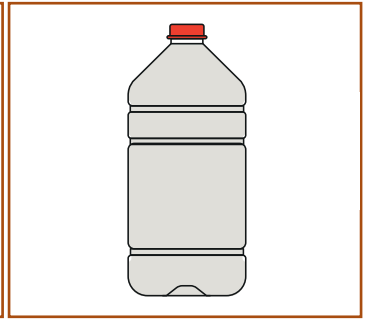
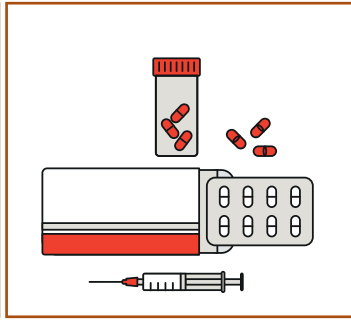
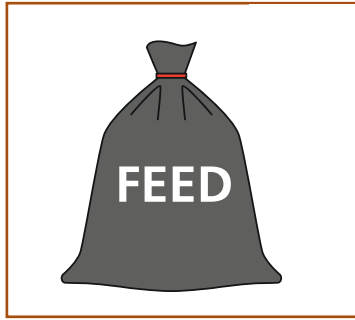
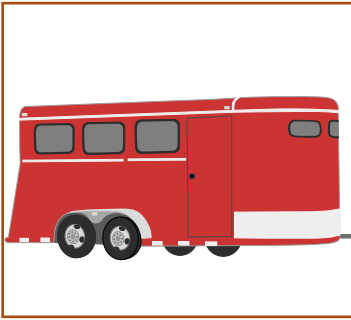


# LIVESTOCK EVACUATION PLANNING



## Emergency Preparedness Planning Evacuation Checklist for Livestock



**Safeguard your animals, your property and your business by taking precautions now, no matter what the risks are in your area.**

Although a shelter in place may be the best for some emergencies, there is possibility that you may need to evacuate your livestock as well as your family and yourself.

### Step 1: Know the risks and get prepared

Although the consequences of emergencies can be similar, knowing the risks specific to your community and your region can help you better prepare. It is even more important to be aware of the risks in your area if you live on a farm with livestock and poultry.

- Arrange in advance for a place to shelter your animals.
- **Be ready to leave as soon as an evacuation is ordered. Be prepared to get out early; livestock and trailers will likely require extra evacuation time.**
- Set up safe transportation. You will need to have access to trucks, trailers, and other vehicles suitable for transporting each type of animal, along with experienced handlers and drivers.

**PLEASE NOTE:** If the order for evacuation is given, a reception centre and an emergency update line will be set-up where you can get information regarding livestock evacuation.

### Step 2: Make an emergency plan

- Make an emergency plan to protect your property, your facilities, and your animals. Create a contact list of emergency telephone numbers, including your employees, neighbours, veterinarian, poison control, transportation resources, local volunteer organizations, and an out of town contact person who is unlikely to be affected by the same emergency. Make sure all this information is written down, and that everyone on your farm and your contact person has a copy.
- Review, test, and update your emergency plan, supplies, and information regularly.

### Step 3: Prepare a farm emergency kit

Make an emergency kit so you have emergency supplies in one location, and let everyone know where it is. Check and update contents regularly. Include the following items and personalize according to your needs:

- Current list of all animals, including their location and records of feeding, vaccinations, and tests. Make this information available at various locations on the farm.
- Supplies for temporary identification of your animals, such as plastic neckbands and permanent markers to label animals with your name, address, and telephone number.

For a complete list go to [www.yhcounty.ca/evacprep](http://www.yhcounty.ca/evacprep)

# EMERGENCY LIVESTOCK PREPAREDNESS KIT



Feed & Water	Medical	Documents
<input type="checkbox"/> Feed and water buckets <input type="checkbox"/> Three day supply of feed <input type="checkbox"/> Water or alternative water supply	<input type="checkbox"/> Records of vaccinations or testing <input type="checkbox"/> Basic animal first aid kit	<input type="checkbox"/> Current list of livestock owned and descriptions or pictures <i>i.e. horse, sorrel, 2 white socks</i> <input type="checkbox"/> Forms of identification present on animals <i>i.e. ear tags, brands, tattoos</i> <input type="checkbox"/> Records of ownership if possible and photos

Handling Equipment	Other	Clothing & Comfort Items
<input type="checkbox"/> Handling equipment such as halters, cages, blankets, lead ropes and appropriate tools for each kind of animal. <input type="checkbox"/> Include bolt-cutters to quickly free animals in an emergency.	<input type="checkbox"/> Fencing Pliers; cut barbed wire fences to allow animals to move to high ground during a flood <input type="checkbox"/> Permanent Marker; write your contact info on hooves <input type="checkbox"/> Spray Paint or Blu Kote; spray your contact info on their sides	<input type="checkbox"/> Horse blankets <input type="checkbox"/> Comb or brush

## FILL ALL WATER TROUGHS.

This will:

1. Increase your water supply;
  2. Weight them down in a high wind or tornado situation
- Keep access ways open and free of debris *i.e.* snow fallen trees etc.
  - Consider installing a hand pump or large water containers, as municipal water and well water may be contaminated during an emergency.
  - Ensure that the electricity on the farm (typically on a power pole into the farm) is turned off.

## Create a map of your property for First Responders.

Include:

- a. buildings
- b. animal locations
- c. power sources
- d. hazard materials or flammable storage
- e. electrical, gas, and water shut-offs
- f. location of gates
- g. equipment parking

Also, check out our [Emergency Evacuation Preparation list](#).

Request one from Yellowhead County or download it online at [www.yhcounty.ca/evacprep](http://www.yhcounty.ca/evacprep)